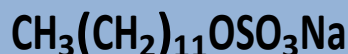




## Product Specification

### SODIUM LAURYL SULPHATE FOR MOLECULAR BIOLOGY

<b>PRODUCT CODE</b>	<b>986680</b>
<b>SYNONYMS</b>	(Sodium dodecyl sulphate)
<b>C.I. NO.</b>	--
<b>CASR NO.</b>	(151-21-3)
<b>ATOMIC OR MOLECULAR FORMULA</b>	$\text{CH}_3(\text{CH}_2)_{11}\text{OSO}_3\text{Na}$
<b>ATOMIC OR MOLECULAR WEIGHT</b>	288.38
<b>PROPERTIES</b>	Slight characteristic odour , Hygroscopic.



PARAMETER	LIMIT
Description	White powder.
Solubility	5% solution in water is clear and colourless.
Minimum Assay ( After drying,two phase titration.)	99.0%
DNase & RNase	None detected.
Maximum absorbance (3% solution in water at 260 - 280nm )	< 0.3

#### MAXIMUM LIMIT OF IMPURITIES

Chloride (Cl)	0.05%
Phosphate (PO <sub>4</sub> )	0.001%
Lead (Pb)	0.001%

**Note(s) : 1) Assay (if applicable) method mentioned.**

#### DANGER

**Hazard statements :** Flammable solid. Harmful if swallowed. Causes skin irritation Causes eye irritation. May cause allergic or asthmatic symptoms or breathing difficulties if inhaled. May cause allergic skin reaction.

#### Precautionary statements

**Prevention :** Contaminated clothing should not be allowed out of the workplace. Wash hands thoroughly after handling. Wash thoroughly after handling. Avoid breathing dust/fume/gas/mist/vapours/spray. In case of inadequate ventilation wear respiratory protection. Keep away from heat/sparks/open flame - No smoking. Wear protective gloves and eye/face protection. Use explosion-proof electrical/ventilating/lighting /equipment Do not eat, drink or smoke when using this product. Ground/bond container and receiving equipment.

**Response :** If skin irritation or rash occurs, seek medical advice/attention. If skin irritation occurs, seek medical advice/attention. If experiencing respiratory symptoms call a POISON CENTER or doctor/physician. IF INHALED: If breathing is difficult, remove to fresh air and keep at rest in a position comfortable for breathing minutes. Remove contact lenses , if present and easy to do. Continue rinsing. Remove/ Take off immediately all contaminated clothing. Specific treatment: refer to Label or MSDS. Wash/Decontaminate removed clothing before reuse. Wash contaminated clothing before reuse. IF ON SKIN: Gently wash with plenty of soap and water.

IMDG Code : 4.1/III

UN No. : 1325

IATA : 4.1

**Disposal:** Dissolve the chemical to be disposed, in water and allow it to run to waste, diluting with large quantities of water. The waste chemical should be buried on a stage approved site .The liquids should be absorbed on sand.

**Hazard Pictogram(s) :**



Flammable



Skin irritation



Aspiration hazard