

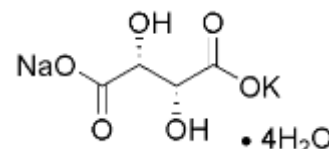


# Product Specification

cdhfinechemical.com

## POTASSIUM SODIUM (+) TARTRATE AR/ACS

<b>PRODUCT CODE</b>	<b>615305</b>
<b>SYNONYMS</b>	<b>(Rochelle salt ;Seignette salt.)</b>
<b>C.I. NO.</b>	--
<b>CASR NO.</b>	<b>(6381 -59-5)</b>
<b>ATOMIC OR MOLECULAR FORMULA</b>	<b>C<sub>4</sub>H<sub>4</sub>O<sub>6</sub>NaK.4H<sub>2</sub>O</b>
<b>ATOMIC OR MOLECULAR WEIGHT</b>	<b>282.22</b>
<b>PROPERTIES</b>	soluble in water, insoluble in alcohol, loses water of crystalliation at 140°C, unstable above 225°C.



<b>PARAMETER</b>	<b>LIMIT</b>
Description	Colourless crystals or a white crystalline powder.
Solubility	10% solution in water is clear and colourless.
Minimum Assay(Non-aqueous)	99.0%
pH of (5% <a href="#">soln.in</a> water)	6.5 - 8.5
Specific rotation (α) <sup>20</sup> <sub>D</sub> (C=10, H <sub>2</sub> O)	+19.0 to +25.0°

### MAXIMUM LIMIT OF IMPURITIES

Reducing substances	No reaction.
Insoluble matter	0.003%
Chloride (Cl)	0.0005%
Phosphate (PO <sub>4</sub> )	0.001%
Sulphate (SO <sub>4</sub> )	0.005%
Ammonium (NH <sub>4</sub> )	0.005%
Arsenic (As)	0.00002%
Calcium (Ca)	0.002%
Copper (Cu)	0.0002%
Iron (Fe)	0.0005%
Lead (Pb)	0.0002%
Magnesium (Mg)	0.002%

<b>Note(s) : Assay (if applicable) method mentioned.</b>	
<b>WARNING</b> <b>Hazard statements :</b> Not hazardous. No hazards. <b>Precautionary statements</b> <b>Prevention:</b> ----- <b>Response:</b> ---	IMDG Code : UN No. : IATA :
<b>Disposal:</b> Dissolve the chemical to be disposed, in water and allow it to run to waste, diluting with large quantities of water.	
<b>Hazard Pictogram(s) :--</b>	