

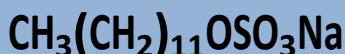


## Product Specification

### SODIUM LAURYL SULPHATE POWDER

#### MEETS ANALYTICAL SPECIFICATIONS OF IP, BP, PH EUR, USP-NF.

<b>PRODUCT CODE</b>	<b>044145</b>
<b>SYNONYMS</b>	(Sodium dodecyl sulphate)
<b>C.I. NO.</b>	--
<b>CASR NO.</b>	(151-21-3)
<b>ATOMIC OR MOLECULAR FORMULA</b>	CH <sub>3</sub> (CH <sub>2</sub> ) <sub>11</sub> OSO <sub>3</sub> Na
<b>ATOMIC OR MOLECULAR WEIGHT</b>	288.38
<b>PROPERTIES</b>	Slight characteristic odour , Hygroscopic.



<b>PARAMETER</b>	<b>LIMIT</b>
Description	A white or pale yellow powder or crystals.
Solubility	0.1 M solution in water is clear to nearly clear and colourless to slightly yellow.
Identification	Passes tests
Minimum Assay [as Sodium lauryl sulphate]	90.0%

#### MAXIMUM LIMIT OF IMPURITIES

Loss on drying	5.0%
Non-esterified alcohols	4.0%
Sodium chloride and Sodium sulphate (combined)	6.0%
Alkalinity	Passes test
Heavy metals(as Pb)	0.002%
Residual solvents	Meets the requirement.

**Note(s) : 1) Assay (if applicable) method mentioned.**

**2) Store protected from moisture.**

#### DANGER

**Hazard statements :** Flammable solid. Harmful if swallowed. Causes skin irritation Causes eye irritation. May cause allergic or asthmatic symptoms or breathing difficulties if inhaled. May cause allergic skin reaction.

#### Precautionary statements

**Prevention :** Contaminated clothing should not be allowed out of the workplace. Wash hands thoroughly after handling. Wash thoroughly after handling. Avoid breathing dust/fume/gas/mist/vapours/spray. In case of inadequate ventilation wear respiratory protection. Keep away from heat/sparks/open flame - No smoking. Wear protective gloves and eye/face protection. Use explosion-proof electrical/ventilating/lighting /equipment. Do not eat, drink or smoke when using this product. Ground/bond container and receiving equipment.

**Response :** If skin irritation or rash occurs, seek medical advice/attention. If skin irritation occurs, seek medical advice/attention. If experiencing respiratory symptoms call a POISON CENTER or doctor/physician. IF INHALED: If breathing is difficult, remove to fresh air and keep at rest in a position comfortable for breathing minutes. Remove contact lenses , if present and easy to do. Continue rinsing. Remove/Take off immediately all

IMDG Code : 4.1/III

UN No. : 1325

IATA : 4.1



# Central Drug House (P) Ltd.

AN ISO 9001:2008 CERTIFIED COMPANY

Manufacturers of : Laboratory Fine Chemicals & Dehydrated Culture Media

[www.cdhfinechemical.com](http://www.cdhfinechemical.com)

contaminated clothing. Specific treatment: refer to Label or MSDS. Wash/Decontaminate removed clothing before reuse. Wash contaminated clothing before reuse. IF ON SKIN: Gently wash with plenty of soap and water.

**Disposal:** Dissolve the chemical to be disposed, in water and allow it to run to waste, diluting with large quantities of water. The waste chemical should be buried on a stage approved site .The liquids should be absorbed on sand.

**Hazard Pictogram(s) :**



**Flammable**



**Skin irritation**



**Aspiration hazard**