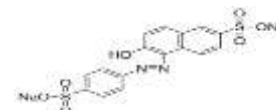


## SUNSET YELLOW

<b>PRODUCT CODE</b>	<b>329385</b>
<b>SYNONYMS</b>	<b>(Sunset Yellow FCF),(Food Yellow 3).</b>
<b>C.I. NO.</b>	<b>15985</b>
<b>CASR NO.</b>	<b>(2783-94-0)</b>
<b>ATOMIC OR MOLECULAR FORMULA</b>	<b>C<sub>16</sub>H<sub>10</sub>N<sub>2</sub>Na<sub>2</sub>O<sub>7</sub>S<sub>2</sub></b>
<b>ATOMIC OR MOLECULAR WEIGHT</b>	<b>452.37</b>
<b>PROPERTIES</b>	<b>--</b>



<b>PARAMETER</b>	<b>LIMIT</b>
Description	Light yellow to brown to dark red powder or crystal.
Solubility	Soluble in water.
Dye Content (Titanometry; on dried Substance)	Min.90.0%

<b>MAXIMUM LIMIT OF IMPURITIES</b>	
Volatile matter (at 135 °C)	10.0%
Water insoluble matter	0.5%
Lead (Pb)	0.001%
Arsenic (As)	0.0003%

**Note(s) : Assay (if applicable) method mentioned.**

### WARNING

**Hazard statements :** Harmful if swallowed. May cause allergic skin reaction. May cause damage to organs through prolonged or repeated exposure. Harmful to aquatic life with long lasting effects.

### Precautionary statements

**Prevention:** Wash hands thoroughly after handling. Do not breathe dust/fume/gas/mist/vapours/spray. Avoid breathing dust/fume/gas/mist/vapours /spray. Do not eat, drink or smoke when using this product. Contaminated clothing should not be allowed out of the workplace.

**Response:** If skin irritation or rash occurs, seek medical advice/attention. Get medical advice/attention if you feel unwell. IF ON SKIN: Gently wash with plenty of soap and water. Specific treatment: refer to Label or MSDS. Wash contaminated clothing before reuse..

**Disposal:** Dissolve the chemical to be disposed, in water and allow it to run to waste, diluting with large quantities of water.

The quantities greater than 10g should be dissolved in water and transferred to heavy metal waste drums for collection by specialist disposal company. The waste chemical should be buried on a stage approved site .The liquids should be absorbed on sand.

IMDG Code :

UN No. :

IATA :

Hazard Pictogram(s) :-



GHS07



GHS08

Replace date 14-Feb-2024