

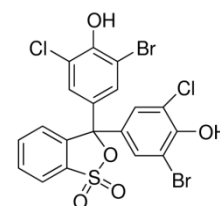


Product Specification

cdhfinechemical.com

BROMO CHLOROPHENOL BLUE AR

| | |
|---|---|
| PRODUCT CODE | 286395 |
| SYNONYMS | 3,3''-Dibromo-5,5''-Dichlorophenolsulphonephthalein. |
| C.I. NO. | -- |
| CASR NO. | (2553-71-1) |
| ATOMIC OR MOLECULAR FORMULA | C₁₉H₁₀Br₂Cl₂O₅S |
| ATOMIC OR MOLECULAR WEIGHT | 581.06 |
| PROPERTIES | -- |
| PARAMETER | LIMIT |
| Description | Red powder. |
| Solubility | Soluble in ethanol. |
| Dye content | 95% |
| Melting point | About 230 ⁰ C |
| Absorption λ max | 590 nm |
| MAXIMUM LIMIT OF IMPURITIES | |
| Loss on drying | 1.0% |
| Residue on Ignition (as Sulphate) | 0.5% |
| Note(s) :Assay (if applicable) method mentioned. | |
| DANGER Hazard statements: -- Prevention: -- Response:-- | IMDG Code :-- UN No. : -- IATA : -- |
| Disposal:-- | |
| Hazard Pictogram(s) : | |



Replace date 17-June-2023