

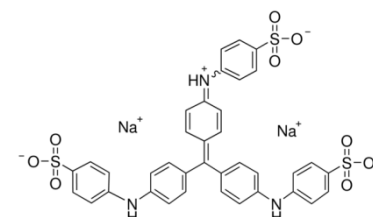


Product Specification

cdhfinechemical.com

COTTON BLUE FOR MICROSCOPY

| | |
|-----------------------------|-----------------------------|
| PRODUCT CODE | 055580 |
| SYNONYMS | -- |
| C.I. NO. | -- |
| CASR NO. | 28983-56-4 |
| ATOMIC OR MOLECULAR FORMULA | $C_{37}H_{27}N_3Na_2O_9S_3$ |
| ATOMIC OR MOLECULAR WEIGHT | 799.80 |
| PROPERTIES | -- |



| PARAMETER | LIMIT |
|---|--|
| Description | Red to dark blue/dark blue to dark brown crystals or powder. |
| Solubility | Soluble in water. |
| Dye content (Titanometry) | >60.0% |
| Visual pH Transition | pH- 10.0 –Blue pH-13.0 – Orange |
| Absorption maximum (in 0.005M HCl) | 594-610 nm |
| Absorption Ratio (A λ max-15nm) | 0.96-1.09 |
| (A λ max+15nm) | |
| Absorption (A1%1cm at λ max.0.005M HCl) | 675-1125 |
| Suitability for microscopy | To passes the test |
| MAXIMUM LIMIT OF IMPURITY | |
| Loss on drying (at 110 ^o C) | 5.0% |

Note(s) : Assay (if applicable) method mentioned.

WARNING

HAZARD STATEMENTS : May cause drowsiness and dizziness. Causes mild skin irritation. Causes eye irritation. May cause allergic skin reaction.

PRECAUTIONARY STATEMENTS :

Prevention : Contaminated clothing should not be allowed out of the workplace. Avoid breathing dust/fume/gas/mist/vapours/spray. Wash hands thoroughly after Handling .

Response : If skin irritation occurs, seek medical advice/attention. If skin irritation or rash occurs, seek medical advice/attention. If eye irritation persists, get medical advice/attention. IF IN EYES: Rinse cautiously with water for several minutes. Remove contact lenses, if present and easy to do. Continue rinsing. Specific treatment: refer to Label or MSDS. IF ON SKIN: Gently wash with plenty of soap and water. Wash contaminated clothing before reuse.

Disposal : Dissolve the chemical to be disposed, in water and allow it to run to waste, diluting with large quantities of water. The chemical should be mixed with combustible solvent and burnt in a chemical incinerator equipped with burner and scubber.

Hazard Pictogram(s) :-



GHS07

IMDG Code : --
UN No. : --
IATA : --