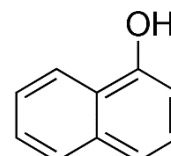


1-NAPHTHOL AR

PRODUCT CODE	592665
SYNONYMS	α-naphthol
C.I. NO.	--
CASR NO.	(90-15-3)
ATOMIC OR MOLECULARFORMULA	C₁₀H₇OH
ATOMIC OR MOLECULARWEIGHT	144.17
PROPERTIES	light sensitive, Sublimable, volatile with steam.



PARAMETER	LIMIT
Description	Pink to brownish flakes, with a characteristic odour.
Solubility	10% solution in ethanol is clear.
Minimum Assay (By GC)	99.0%
Melting Point	95.0 - 97.0°C

MAXIMUM LIMIT OF IMPURITIES

Insoluble matter	0.01%
Chloride (Cl)	0.005%
Iron (Fe)	0.001%
Heavy metals (as Pb)	0.001%
Naphthalene (By GC)	0.2%
2-Naphthol (By GC)	0.2%
Sulphated ash	0.02%
Water (By KF)	0.2%

Note(s) : Assay (if applicable) method mentioned.

DANGER

HAZARD STATEMENTS : Toxic if swallowed. Causes serious eye damage. Very toxic to aquatic life with long lasting effects.

PRECAUTIONARY STATEMENTS :

Prevention : Wash hands thoroughly after handling. Do not eat, drink or smoke when using this product. Avoid release to the environment.

Wear protective gloves/protective clothing/eyes protection/face protection.

Response : IF SWALLOWED: Immediately call a POISON CENTER or doctor/physician. IF IN EYES. rinse cautiously with water for several minutes. Remove contact lenses, if present and easy to do. Continue rinsing. Immediately call a POISON CENTER or doctor/physician. Rinse mouth. Collect spillage.

Disposal : Dissolve the chemical to be disposed, in water and allow it to run to waste, diluting with large quantities of water. The quantities greater than 10g should be dissolved in water and transferred to heavy metal waste drums for collection by specialist disposal company.

IMDG Code : 6.1/III

UN No. : 2811

IATA : 6.1

Hazard Pictogram(s) :-



GHS06



GHS05



GHS09

Replace Date: 3-April-2018