

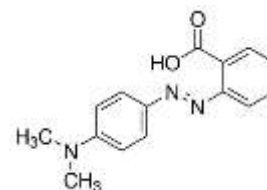


# Product Specification

cdhfinechemical.com

## METHYL RED pH INDICATOR CERTIFIED GRADE

<b>PRODUCT CODE</b>	<b>H47943</b>
<b>SYNONYMS</b>	--
<b>C.I. NO.</b>	<b>13020</b>
<b>CASR NO.</b>	<b>(493-52-7)</b>
<b>ATOMIC OR MOLECULAR FORMULA</b>	<b>C<sub>15</sub>H<sub>15</sub>N<sub>3</sub>O<sub>2</sub></b>
<b>ATOMIC OR MOLECULAR WEIGHT</b>	<b>269.30</b>
<b>PROPERTIES</b>	<b>Almost insoluble in water. Soluble in alcohol and in acetic acid.</b>



### PARAMETER LIMIT

Description	Red, dark red, maroon or violet powder.
Solubility	Soluble in alcohol and in acetic acid.
Identification (UV-VIS Spectrum )	Passes test.
Absorption maximum	
λ 1 (pH 4.5)	523-526 nm
λ 1 (pH 6.2)	427-437 nm
Absorptivity (on dried sub.) (A1%/1 cm at λ 1 max pH 4.5)	1330 - 1430
(A1%/1 cm at λ 2max pH 6.2)	700 - 800
Clarity of alcohol solution	Passes test.
Visual Transition Interval	From pH 4.2 – pink to pH 5.5 - Orange to pH 6.2 - yellow
Melting point	179-182°C

### MAXIMUM LIMIT OF IMPURITY

Loss on drying (at 110°C)	5.0%
---------------------------	------

**Note(s) : 1] Assay (if applicable) method mentioned.**

#### WARNING

**Hazard statements :** Not hazardous. No hazards.

**Precautionary statements**

**Prevention: -----**

**Response: ---**

IMDG Code :

UN No. :

IATA :

**Disposal : -----**

Hazard Pictogram(s) :