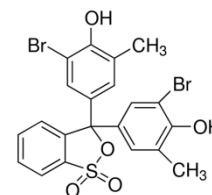


## BROMO CRESOL PURPLE INDICATOR AR

PRODUCT CODE	286765
SYNONYMS	--
C.I. NO.	--
CASR NO.	(115-40-2)
ATOMIC OR MOLECULAR FORMULA	C <sub>21</sub> H <sub>16</sub> Br <sub>2</sub> O <sub>5</sub> S
ATOMIC OR MOLECULAR WEIGHT	540.24
PROPERTIES	--



PARAMETER	LIMIT
Description	Light pink/salmon coloured powder.
Solubility	Soluble in alcohol.
pH Transition Range	pH 5.2 - 6.8 Greenish yellow - blue violet
Absorption maximum	
λ <sub>1</sub> (pH 5.2)	427 - 431 nm
λ <sub>2</sub> (pH 6.8)	588 - 590 nm
Absorptivity (A1% / 1 cm at λ <sub>1</sub> ; (pH 5.2) on dried substance)	400 - 450
Absorptivity (A1% / 1 cm at λ <sub>2</sub> ; (pH 6.8) on dried substance)	1000 - 1100

### MAXIMUM LIMIT OF IMPURITY

Loss on drying	1.0%
----------------	------

Note(s) : Assay (if applicable) method mentioned.

### WARNING

Hazard statements: Not hazardous. No hazards.

Precautionary statements

Prevention: -----

Response: -----

Disposal:-----

Hazard Pictogram(s) :-----

IMDG Code : --

UN No. : --

IATA : --

Replace Date 17-June-2023