

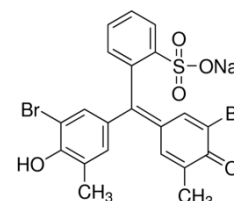


# Product Specification

cdhfinechemical.com

## BROMO CRESOL PURPLE SODIUM SALT

|                                    |   |
|------------------------------------|---|
| <b>PRODUCT CODE</b>                | <b>286855</b>   |
| <b>SYNONYMS</b>                    | <b>5,5-Dibromo-o-cresolsulfonaphthalein sodium salt.</b>          |
| <b>C.I. NO.</b>                    | --  |
| <b>CASR NO.</b>                    | <b>(62625-30-3)</b>   |
| <b>ATOMIC OR MOLECULAR FORMULA</b> | <b>C<sub>21</sub>H<sub>15</sub>Br<sub>2</sub>NaO<sub>5</sub>S</b> |
| <b>ATOMIC OR MOLECULAR WEIGHT</b>  | <b>562.22</b>   |
| <b>PROPERTIES</b>                  | --  |



| <b>PARAMETER</b> | <b>LIMIT</b> |
|------------------|--------------|
|------------------|--------------|

|   |                                |
|---|--------------------------------|
| Description                                   | Red-brown/orange rust powder.  |
| Solubility                                    | 0.1% in water is clear.        |
| Dye content (titration by AgNO <sub>3</sub> ) | Min 90%                        |
| Visual transition interval                    | pH 5.2 – 6.8<br>Yellow-purple. |
| Sensitivity                                   | Passes test.                   |

**Note(s) : Assay (if applicable) method mentioned.**

### WARNING

**Hazard statements :** May cause respiratory irritation. Causes skin irritation. Causes serious eye irritation.

### Precautionary statements

**Prevention:** Avoid breathing dust/fume/gas/mist/vapours/spray. Wash thoroughly after handling. Use only outdoors or in a well-ventilated area. Wear protective gloves/protective clothing/eye protection/face protection.

**Response:** IF INHALED: Remove to fresh air and keep at rest in a position comfortable for breathing. IF IN EYES: Rinse cautiously with water for several minutes. Remove contact lenses, if present and easy to do. Continue rinsing. Call a POISON CENTER or doctor/physician if you feel unwell. If eye irritation persists: Get medical advice/attention.

IMDG Code : --  
UN No. : --  
IATA :--

**Disposal:** Dissolve the chemical to be disposed, in water and allow it to run to waste, diluting with large quantities of water. The quantities greater than 10g should be dissolved in water and transferred to heavy metal waste drums for collection by specialist disposal company.

### Hazard Pictogram(s) :



GHS07

Replace Date 29-May-2023