

NAPHTHALENE AR

PRODUCT CODE 592395

SYNONYMS --

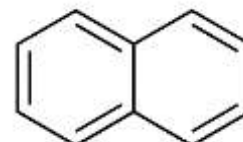
C.I. NO. --

CASR NO. (91-20-3)

ATOMIC OR MOLECULAR FORMULA C₁₀H₈

ATOMIC OR MOLECULAR WEIGHT 128.17

PROPERTIES Odour of moth balls. Volatilizes at room temperature. Insoluble in water.



PARAMETER **LIMIT**

Description White to almost white scales / crystalline powder/flakes.

Solubility 5% solution in methanol is clear and almost colourless.

Minimum Assay (GC) 99.0%

Melting Point 79.5 – 81.0°C

Note(s) : 1] Assay (if applicable) method mentioned.

DANGER

Hazard statements : May cause respiratory irritation Flammable solid. Harmful if swallowed May cause allergic skin reaction Suspected of causing cancer.Cause serious eye damageVery toxic to aquatic life with long lasting effects

Precautionary statements

Prevention : Do not handle until all safety precautions have been read and understood.Wash hands thoroughly after handling.Do not eat, drink or smoke when using this product.Avoid breathing dust/fume/gas/mist/vapours/spray.Contaminated clothing should not be allowed out of the workplace. Obtain special instructions before use.Use personal protective equipment as required.Keep away from heat/sparks/open flame - No smoking.Wear protective gloves and eye/face protection.Ground/bond container and receiving equipment.Use explosion-proof electrical/ventilating/lighting/equipment

Response : Wear eye/face protection.If eye irritation persists, get medical advice/attention. If skin irritation or rash occurs, seek medical advice/attention.If exposed or concerned: Get medical attention advice.IF IN EYES: Rinse cautiously with water for several minutes.Remove contact lenses, if present and easy to do. Continue rinsing.IF ON SKIN: Gently wash with plenty of soap and water.Specific treatment: refer to Label or MSDS.Wash contaminated clothing before reuse.Immediately call a POISON CENTER or doctor/physician.

IMDG Code : 4.1/III

UN No. : 1334

IATA : 4.1

Disposal : Dispose of contents and container in accordance with relevant legislation.

Hazard Pictogram(s) :



GHS02



GHS05



GHS08



GHS09