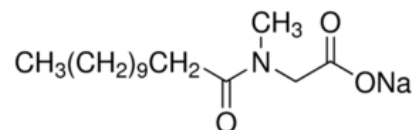


## SARCOSYL FOR MOLECULAR BIOLOGY

<b>PRODUCT CODE</b>	<b>973390</b>
<b>SYNONYMS</b>	<b>N-Lauroylsarcosine sodium salt</b>
<b>C.I. NO.</b>	--
<b>CASR NO.</b>	<b>137-16-6</b>
<b>ATOMIC OR MOLECULAR FORMULA</b>	<b>C<sub>15</sub>H<sub>28</sub>NO<sub>3</sub>Na</b>
<b>ATOMIC OR MOLECULAR WEIGHT</b>	<b>293.38</b>
<b>PROPERTIES</b>	<b>Store below 30°C</b>



PARAMETER	LIMIT
Description	White to off-white powder or solid
Solubility	Soluble in water
pH (10 % in water at 25°C)	7.0-9.0
Minimum assay (NT)	94.0%

### MAXIMUM LIMIT OF IMPURITIES

Water (K.F.)	5.0%
DNase, RNase	None detected

**Note(s) : Assay (if applicable) method mentioned.**

#### DANGER

**Hazard statements:** May cause respiratory irritation. May intensify fire; oxidizer. Toxic if swallowed. Harmful if inhaled. Causes mild skin irritation. Causes serious eye irritation. Harmful to aquatic life.

#### Precautionary statements

**Prevention:** Keep away from heat/sparks/open flames/hot surfaces. - No smoking. Keep/Store away from clothing and other combustible materials. Take any precaution to avoid mixing with combustibles. Avoid breathing dust/fume/gas/mist/vapours/spray. Wash thoroughly after handling. Do not eat, drink or smoke when using this product. Use only outdoors or in a well-ventilated area. Avoid release to the environment. Wear protective gloves/protective clothing/eye protection/face protection.

**Response:** IF SWALLOWED: Immediately call a POISON CENTER or doctor/physician. IF INHALED: Remove to fresh air and keep at rest in a position comfortable for breathing. IF IN EYES: Rinse cautiously with water for several minutes. Remove contact lenses, if present and easy to do. Continue rinsing. Call a POISON CENTER or doctor/physician if you feel unwell. Rinse mouth. If skin irritation occurs: Get medical advice/ attention. If eye irritation persists: Get medical advice/attention.

**Disposal:** Dispose of contents and container in accordance with relevant legislation.

IMDG Code : 6.1/ II

UN No. : 2811

IATA : 6.1

Hazard Pictogram(s) :-



GHS03



GHS06