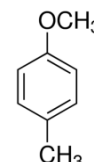


PARA CRESYL METHYL ETHER FOR SYNTHESIS

PRODUCT CODE	184085
SYNONYMS	(4-Methylanisole, p-Methoxytoluene, Methyl-p-cresol)
C.I. NO.	--
CASR NO.	(104-93-8)
ATOMIC OR MOLECULAR FORMULA	C₈H₁₀O
ATOMIC OR MOLECULAR WEIGHT	122.16
PROPERTIES	Combustible.



PARAMETER	LIMIT
Description	Clear colourless to slightly yellowish liquid.
Solubility	5.0% solution in ethyl alcohol is clear.
Minimum assay(GC)	99.0%
Wt. per ml at 20 ^o C	0.968-0.970 g
Refractive Index (n) ₂₀ ^D	1.510-1.513
Boiling range	173-175°C

Note(s) : Assay (if applicable) method mentioned.

WARNING

HAZARD STATEMENTS : May cause respiratory irritation. Flammable liquid and vapour. Harmful if swallowed. Causes mild skin irritation. Causes eye irritation.

PRECAUTIONARY STATEMENTS :

Prevention : Ground/bond container and receiving equipment. Use only nonsparking tools. Take precautionary Measures against static discharge. Wash hands thoroughly after handling. Do not eat, drink or smoke when using this product. Keep away from heat/sparks/open flame - No smoking. Keep container tightly closed. Use explosion-proof electrical/ventilating/lighting/equipment. Wear protective gloves and eye/face protection.

Response : If eye irritation persists, get medical advice/attention. If skin irritation occurs, seek medical advice/attention. IF SWALLOWED: Rinse mouth. Do NOT induce vomiting. IF IN EYES: Rinse cautiously with water for several minutes. Remove contact lenses, if present and easy to do. Continue rinsing. Specific treatment: refer to Label or MSDS. If on skin or hair: remove/take off immediately all contaminated clothing. Rinse with water/shower. In case of fire, use foam for extinction.

IMDG Code : 3/II
UN No. : 1993C
IATA : 3

Disposal : Allow to evaporate in safe open area (applicable for small quantities). The chemical should be burnt in a chemical incinerator equipped with burner and scrubber. If the volumes are larger than 500ml and no incinerator and site of evaporation is not available then transfer the waste chemical to waste solvent drum for collection by specialist disposal company.

Hazard Pictogram(s) :



GHS02



GHS07