

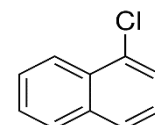


Product Specification

cdhfinechemical.com

1-CHLORO NAPHTHALENE FOR SYNTHESIS

PRODUCT CODE	050555
SYNONYMS	--
C.I. NO.	--
CASR NO.	(90-13-1)
ATOMIC OR MOLECULAR FORMULA	C ₁₀ H ₇ Cl
ATOMIC OR MOLECULAR WEIGHT	162.62
PROPERTIES	Volatile with steam.



PARAMETER	LIMIT
Description	Colourless to pale yellow liquid.
Solubility	Soluble in benzene and alcohol.
Minimum assay (GC)	90.0%
Wt. per ml at 20°C	About 1.194gm
Boiling range	About 259°C

MAXIMUM LIMIT OF IMPURITY

2-chloro naphthalene	Not more than 10.0%
----------------------	---------------------

Note(s): Assay (if applicable) method mentioned.

HAZARD WARNING

Harmful if swallowed. Causes skin irritation. May cause an allergic skin reaction. Causes serious eye irritation. May cause respiratory irritation. Toxic to aquatic life with long lasting effects.

PRECAUTIONARY STATEMENTS

Prevention :Avoid breathing dust/ fume/ gas/ mist/ vapours / spray. Wash ... thoroughly after handling. Do not eat, drink or smoke when using this product. Use only outdoors or in a well- ventilated area. Contaminated work clothing should not be allowed out of the workplace. Avoid release to the environment. Wear protective gloves/protective clothing/eye protection/face protection.

Response: IF SWALLOWED: Call a POISON CENTER or doctor/physician if you feel unwell. IF ON SKIN: Wash with plenty of soap and water. IF INHALED: Remove victim to fresh air and keep at rest in a position comfortable for breathing. IF IN EYES: Rinse cautiously with water for several minutes. Remove contact lenses, if present and easy to do. Continue rinsing. Call a POISON CENTER or doctor/physician if you feel unwell. Rinse mouth. If skin irritation occurs: Get medical advice/attention. If skin irritation or rash occurs: Get medical advice/attention. If eye irritation persists: Get medical advice/attention. Take off contaminated clothing and wash before re- use. Wash contaminated clothing before reuse. Collect spillage.

MDG Code : 9/III
UN No. : 3082
IATA : 9

Disposal : The quantities greater than 10g should be dissolved in dilute acid and transferred to heavy metal waste drum for collection by specialist disposal company.

Hazard Pictogram(s) :



GHS07



GHS09

Replace date:- 29-March-2018