

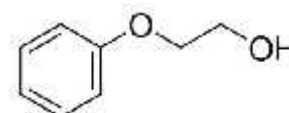


# Product Specification

cdhfinechemical.com

## ETHYLENE GLYCOL MONO PHENYL ETHER

PRODUCT CODE	025515
SYNONYMS	(Phenyl cellosolve), 2-Phenoxy ethanol
C.I. NO.	N/A
CASR NO.	122-99-6
ATOMIC OR MOLECULAR FORMULA	C <sub>8</sub> H <sub>10</sub> O <sub>2</sub>
ATOMIC OR MOLECULAR WEIGHT	138.17
PROPERTIES	---



PARAMETER	LIMIT
Description	A clear colourless to pale yellow slightly viscous liquid.
Solubility	Soluble in alcohol.
Identification (other tests)	Passes tests
Refractive index (n) <sub>D</sub> <sup>20</sup>	1.537-1.539
Minimum assay (By GC)	99.0-100.5%
Wt. per ml at 20°C	1.107 - 1.108 g

MAXIMUM LIMIT OF IMPURITIES	
Related substances (by GC)	1.0%
Peroxide (as H <sub>2</sub> O <sub>2</sub> )	0.005%
Phenol (by UV-Spectroscopy)	0.1%

**Note(s) : Assay (if applicable) method mentioned.**

### WARNING

**Hazard statements :** May cause respiratory irritation. Causes skin irritation. Causes serious eye irritation.

### Precautionary statements

**Prevention:** Avoid breathing dust/fume/gas/mist/vapours/spray. Wash thoroughly after handling. Use only outdoors or in a well-ventilated area. Wear protective gloves/protective clothing/eye protection/face protection.

**Response:** IF INHALED: Remove to fresh air and keep at rest in a position comfortable for breathing. IF IN EYES: Rinse cautiously with water for several minutes. Remove contact lenses, if present and easy to do. Continue rinsing. Call a POISON CENTER or doctor/physician if you feel unwell. If eye irritation persists: Get medical advice/attention.

IMDG Code : --  
UN No. : --  
IATA : --

**Disposal:** Dissolve the chemical to be disposed, in water and allow it to run to waste, diluting with large quantities of water. The quantities greater than 10g should be dissolved in water and transferred to heavy metal waste drums for collection by specialist disposal company.

Hazard Pictogram(s) :



GHS07

Replace Date 11-Dec.2019