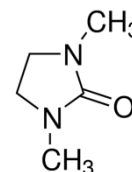




## N, N-DIMETHYL IMIDAZOLIDINONE FOR PESTICIDE RESIDUE ANALYSIS FOR RESIDUAL SOLVENT IMPURITY PROFILE & HEADSPACE ANALYSIS

<b>PRODUCT CODE</b>	<b>075965</b>
<b>SYNONYMS</b>	<b>1,3-Dimethyl-2-imidazolidinone</b>
<b>C.I. NO.</b>	--
<b>CASR NO.</b>	<b>(80-73-9)</b>
<b>ATOMIC OR MOLECULAR FORMULA</b>	<b>C<sub>5</sub>H<sub>10</sub>N<sub>2</sub>O</b>
<b>ATOMIC OR MOLECULAR WEIGHT</b>	<b>114.15</b>
<b>PROPERTIES</b>	--



PARAMETER	LIMIT
Description	Clear colourless to pale yellow liquid.
Solubility	Miscible with methanol.
Minimum Assay (GC)	98.0 %
Wt. per ml at 20°C	1.055 – 1.057 g
Refractive index n <sub>D</sub> <sup>20</sup>	1.4695 – 1.4745


MAXIMUM LIMIT OF IMPURITIES	
Water (KF)	1.0%

**Note(s) : Assay (if applicable) method mentioned.**


<p><b>WARNING</b>  <b>HAZARD DANGER</b> Harmful if swallowed. Harmful to aquatic life with long lasting effects. Causes skin irritation. Causes serious eye damage. May cause respiratory irritation.  <b>PRECAUTIONARY STATEMENTS</b>  <b>Prevention:</b> Avoid breathing dust/ fume/ gas/ mist/ vapours/ spray. Wash . thoroughly after handling. Do not eat, drink or smoke when using this product. Use only outdoors or in a well- ventilated area. Wear protective gloves/protective clothing/eye protection/face protection.  <b>Response: IF SWALLOWED:</b> Call a POISON CENTER or doctor/physician if you feel unwell. <b>IF ON SKIN:</b> Wash with plenty of soap and water. <b>IF INHALED:</b> Remove victim to fresh air and keep at rest in a position. comfortable for breathing. <b>IF IN EYES:</b> Rinse cautiously with water for several minutes. Remove. Contact lenses, if present and easy to do. Continue rinsing. Immediately call a POISON CENTER or doctor/physician. Call a POISON CENTER or doctor/physician if you feel unwell. Rinse mouth. If skin irritation occurs: Get medical advice/attention. Take off contaminated clothing and wash before re- use</p>	<p>IMDG Code : --  UN No. : --  IATA : --</p>
---	---

**Disposal :** The chemical should be mixed with combustibile solvent and burnt in a chemical incinerator equipped with burner and scrubber


Hazard Pictogram(s) :



GHS05



GHS07



GHS08