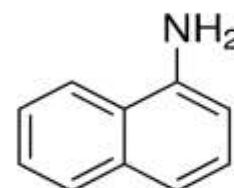


## 1-NAPHTHYLAMINE PRACT

PRODUCT CODE	167565
SYNONYMS	(1-Aminonaphthalene, $\alpha$ -Naphthylamine)
C.I. NO.	--
CASR NO.	[134-32-7]
ATOMIC OR MOLECULARFORMULA	C <sub>10</sub> H <sub>9</sub> N
ATOMIC OR MOLECULARWEIGHT	143.19
PROPERTIES	White crystals becoming red on exposure to air, Reduction of -nitro- naphthalene with iron and hydrochloric acid.



### PARAMETER LIMIT

Description	Tan to purple colour crystals or crystalline powder.
Solubility	33.3 mg soluble in 1 ml of methanol.
Assay (GC)	About 98.0%
Melting Point	47°- 50°C

### MAXIMUM LIMIT OF IMPURITY

2-Naphthylamine (GC)	0.2%
----------------------	------

**Note(s) : Assay (if applicable) method mentioned.**

#### DANGER

**Hazard statements :** Harmful if swallowed. Harmful if inhaled. May cause allergic or asthmatic symptoms or breathing difficulties if inhaled. May cause allergic skin reaction. May cause genetic defects. May cause cancer by inhalation. May damage the unborn child. Causes damage to organs through prolonged or repeated exposure by inhalation.. Very toxic to aquatic life. Very toxic to aquatic life with long lasting effects.

#### Precautionary statements

**Prevention:** Obtain special instructions before use. Do not handle until all safety precautions have been read and understood. Do not breathe dust/fume/gas/mist/ vapours/spray. Avoid breathing dust/fume/gas/mist/ vapours/spray. Wash thoroughly after handling. Do not eat, drink or smoke when using this product. Use only outdoors or in a well-ventilated area. Contaminated work clothing should not be allowed out of the workplace. Avoid release to the environment. Wear protective gloves/protective clothing/ eye rotection/face protection. Use personal protective equipment as required. In case of inadequate ventilation wear respiratory protection.

**Response:** IF SWALLOWED: Call a POISON CENTER or doctor/physician if you feel unwell. IF ON SKIN: Wash with plenty of soap and water. IF INHALED: Remove to fresh air and keep at rest in a position comfortable for breathing. IF INHALED: If breathing is difficult, remove to fresh air and keep at rest in a position comfortable for breathing. IF exposed or concerned: Get medical advice/ attention. Call a POISON CENTER or doctor/physician if you feel unwell. Get medical advice/attention if you feel unwell. Rinse mouth. If skin irritation or rash occurs: Get medical advice/attention. If experiencing respiratory symptoms: Call a POISON CENTER or doctor/physician. Wash contaminated clothing before reuse. Collect spillage.

**Disposal:** Dissolve the chemical to be disposed, in water and allow it to run to waste, diluting with large quantities of water. The quantities greater than 10g should be dissolved in water and transferred to heavy metal waste drums for collection by specialist disposal company.

Hazard Pictogram(s) :-



GHS07



GHS08



GHS09

IMDG Code : 6.1/III

UN No. : 2077

IATA : 6.1

Replace date : 03-June-2022