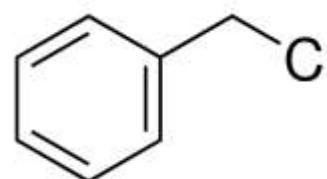


## BENZYL CHLORIDE FOR SYNTHESIS

<b>PRODUCT CODE</b>	<b>027361</b>
<b>SYNONYMS</b>	<b><math>\alpha</math>-Chlorotoluene</b>
<b>C.I. NO.</b>	<b>N/A</b>
<b>CASR NO.</b>	<b>100- 44- 7</b>
<b>ATOMIC OR MOLECULAR FORMULA</b>	<b>C<sub>7</sub>H<sub>7</sub>Cl</b>
<b>ATOMIC OR MOLECULAR WEIGHT</b>	<b>126.59</b>
<b>PROPERTIES</b>	<b>Unpleasant,irritating odour.Combustible.</b>






<b>PARAMETER</b>	<b>LIMIT</b>
Description	A clear and almost colourless liquid.
Solubility	Insoluble in water. Miscible with alcohol, chloroform and ether.
Minimum assay (GC)	99.0%
Wt.per at ml 20°C	1.097 - 1.101 g

<b>MAXIMUM LIMIT OF IMPURITIES</b>	
Non volatile matter	0.05%
Acidity (HCl)	0.007%

**Note(s): Assay (if applicable) method mentioned.**

<p><b>DANGER</b></p> <p><b>Hazard statements:</b> Toxic if swallowed. Suspected of damaging fertility. May be corrosive to metals.Causes severe skin burns and eye damage</p> <p><b>Precautionary statements</b></p> <p><b>Prevention:</b> Wash hands thoroughly after handling.Do not eat, drink or smoke when using this product.Wash thoroughly after handling.Obtain special instructions before use. Wear protective gloves/clothing and eye/face protection. Use personal protective equipment as required. Do not breathe dust or mist.Do not handle until all safety precautions have been read and understood.</p> <p><b>Response:</b> IF IN EYES: Rinse cautiously with water for several minutes. Remove contact lenses, present and easy to do. Continue rinsing.Immediately call a POISON CENTER or doctor/physician. Wash contaminated clothing before reuse. IF INHALED: Remove to fresh air and keep at rest in a position comfortable for breathing. Absorb spillage to prevent material damage. If on skin or hair: remove/take off immediately all contaminated clothing. Rinse with water/shower. If exposed or concerned: Get medical attention advice. IF SWALLOWED: Immediately call a POISON CENTER or doctor/physician. IF SWALLOWED: Rinse mouth. Do NOT induce vomiting.Specific treatment: refer to Label or MSDS.</p> <p><b>Disposal:</b> The chemical should be mixed with combustible solvent and burnt in a chemical incinerator equipped with burner and scrubber.</p>	<p>IMDG Code :8(6.1)/II</p> <p>UN No. :1738</p> <p>IATA :8(6.1)</p>
---	---

<p><b>Hazard Pictogram(s) :</b></p> <div style="display: flex; justify-content: space-around; align-items: center;"> <div style="text-align: center;">  <p>GHS06</p> </div> <div style="text-align: center;">  <p>GHS08</p> </div> <div style="text-align: center;">  <p>GHS05</p> </div> </div>
--

Replace Date 24-Nov.-2018