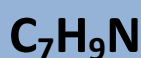


# Product Specification

## m-TOLUIDINE FOR SYNTHESIS

<b>PRODUCT CODE</b>	<b>245245</b>
<b>SYNONYMS</b>	<b>m-Aminotoluene; 3-Methylaniline</b>
<b>C.I. NO.</b>	<b>N/A</b>
<b>CASR NO.</b>	<b>(108-44-1)</b>
<b>ATOMIC ORMOLECULAR FORMULA</b>	<b>C<sub>7</sub>H<sub>9</sub>N</b>
<b>ATOMIC ORMOLECULAR WEIGHT</b>	<b>107.16</b>
<b>PROPERTIES</b>	<b>Combustible. Colour darkens to reddish orange or red on storage.</b>



<b>PARAMETER</b>	<b>LIMIT</b>
Description	Colourless to brownish red liquid.
Solubility	Soluble in alcohol & ether.
Minimum assay (GC)	99.0%
Wt. per ml at 20°C	0.988-0.989 g
Refractive index(n) <sup>20</sup> <sub>D</sub>	About 1.567
Boiling Range (201-205°C)	Min.95.0%

**Note(s) :Assay (if applicable) method mentioned.**

#### **WARNING**

**Hazard statements:** Harmful if inhaled. May be harmful if swallowed. Causes skin irritation. Causes serious eye irritation. Very toxic to aquatic life with long lasting effects.

#### **Precautionary statements**

**Prevention:** Avoid breathing dust/fume/gas/mist/vapours/spray. Wash thoroughly after handling. Wash hands thoroughly after handling. Use only outdoors or in a well ventilated area.

**Response:** IF INHALED: Remove to fresh air and keep at rest in a position comfortable for breathing. Wear eye/face protection. If eye irritation persists, get medical advice/attention. IF IN EYES: Rinse cautiously with water for several minutes. Remove contact lenses, if present and easy to do. Continue rinsing. If skin irritation occurs, seek medical advice/attention. Call a POISON CENTER or doctor/physician if you feel unwell. IF SWALLOWED: Call a POISON CENTER or doctor/physician if you feel unwell. Specific treatment: refer to Label or MSDS. IF ON SKIN: Gently wash with plenty of soap and water. Wash/Decontaminate removed clothing before reuse. Remove/Take off immediately all contaminated clothing

**Disposal:** Dispose of contents and container in accordance with relevant legislation.

IMDG Code : --  
UN No. : --  
IATA : --

Hazard Pictogram(s) :

