

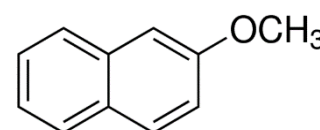


# Product Specification

cdhfinechemical.com

## METHYL-2-NAPHTHYL ETHER FOR SYNTHESIS

PRODUCT CODE	157715
SYNONYMS	2- Methoxy naphthalene
C.I. NO.	--
CASR NO.	(93-04-9)
ATOMIC OR MOLECULAR FORMULA	C <sub>11</sub> H <sub>10</sub> O
ATOMIC OR MOLECULAR WEIGHT	158.20
PROPERTIES	--



PARAMETER	LIMIT
Description	White to off white crystals/solid /flakes.
Solubility	Soluble in benzene and diethyl ether.
Minimum assay (GC)	99.0%
Melting Range	70 – 73°C

**Note(s): Assay (if applicable) method mentioned.**

### WARNING

**Hazard statements:** Harmful if inhaled. May be harmful if swallowed. Causes skin irritation. Causes serious eye irritation. Very toxic to aquatic life with long lasting effects.

### Precautionary statements

**Prevention:** Avoid breathing dust/fume/gas/mist/vapours/spray. Wash thoroughly after handling. Wash hands thoroughly after handling. Use only outdoors or in a well ventilated area.

**Response:** IF INHALED: Remove to fresh air and keep at rest in a position comfortable for breathing. Wear eye/face protection. If eye irritation persists, get medical advice/attention. IF IN EYES: Rinse cautiously with water for several minutes. Remove contact lenses, if present and easy to do. Continue rinsing. If skin irritation occurs, seek medical advice/attention. Call a POISON CENTER or doctor/physician if you feel unwell. IF SWALLOWED: Call a POISON CENTER or doctor/physician if you feel unwell. Specific treatment: refer to Label or MSDS. IF ON SKIN: Gently wash with plenty of soap and water. Wash/Decontaminate removed clothing before reuse. Remove/Take off immediately all contaminated clothing

**Disposal:** Dispose of contents and container in accordance with relevant legislation.

IMDG Code : -- 9 / III

UN No. : -- 3077

IATA : -- 9

Hazard Pictogram(s) :



GHS07



GHS09

Replace Date-01-July.2020