

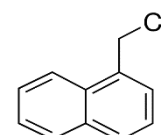


Product Specification

cdhfinechemical.com

1-CHLORO METHYL NAPHTHALENE

PRODUCT CODE	050365
SYNONYMS	1-(Chloromethyl)Naphthalene
C.I. NO.	--
CASR NO.	(86-52-2)
ATOMIC OR MOLECULAR FORMULA	C ₁₁ H ₉ Cl
ATOMIC OR MOLECULAR WEIGHT	176.64
PROPERTIES	--



PARAMETER	LIMIT
Description	Clear, colourless to yellow liquid or solid.
Minimum assay (HPLC)	92.5 %
Wt. per ml at 25°C	1.17 g
Melting range	27 – 30 °C
Refractive index (n) _D ²⁰	1.6335 – 1.6405

Note(s): Assay (if applicable) method mentioned.

WARNING

HAZARD DANGER Harmful if swallowed. Causes skin irritation. Causes serious eye damage. May cause respiratory irritation.

PRECAUTIONARY STATEMENTS

Prevention: Avoid breathing dust/ fume/ gas/ mist/ vapours/ spray. Wash thoroughly after handling. Do not eat, drink or smoke when using this product. Use only outdoors or in a well-ventilated area. Wear protective gloves/protective clothing/eye protection/face protection.

Response: **IF SWALLOWED:** Call a POISON CENTER or doctor/physician if you feel unwell. **IF ON SKIN:** Wash with plenty of soap and water. **IF INHALED:** Remove victim to fresh air and keep at rest in a position comfortable for breathing. **IF IN EYES:** Rinse cautiously with water for several minutes. Remove contact lenses, if present and easy to do. Continue rinsing. Immediately call a POISON CENTER or doctor/physician. Call a POISON CENTER or doctor/physician if you feel unwell. Rinse mouth. If skin irritation occurs: Get medical advice/attention. Take off contaminated clothing and wash before re-use

IMDG Code : 8/II
UN No. : 3261
IATA : 8

Disposal : The chemical should be mixed with combustible solvent and burnt in a chemical incinerator equipped with burner and scrubber

Hazard Pictogram(s) :



GHS05



GHS07

Replace Date: 4-April-2018