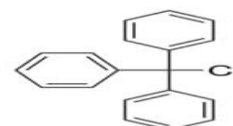


## TRITYL CHLORIDE

<b>PRODUCT CODE</b>	<b>251725</b>
<b>SYNONYMS</b>	(Chloro triphenyl methane, triphenylchloromethane, triphenylmethyl chloride)
<b>C.I. NO.</b>	--
<b>CASR NO.</b>	(76-83-5)
<b>ATOMIC ORMOLECULAR FORMULA</b>	$C_{19}H_{15}Cl$
<b>ATOMIC ORMOLECULAR WEIGHT</b>	278.78
<b>PROPERTIES</b>	--



PARAMETER	LIMIT
Description	White to off white to tan crystalline powder/crystals.
Solubility	2.0% solution in hexane is clear & colourless to faint yellow.
Assay	96.5-103.5 %
Melting Range	109-112°C

**Note(s) : Assay (if applicable) method mentioned.**

### DANGER

**Hazard statements:** Harmful if swallowed. May be corrosive to metals. Causes severe skin burns and eye damage. Causes serious eye damage. Harmful to terrestrial vertebrates.

### Precautionary statements

**Prevention:** Keep only in original container. Do not breathe dust/fume/gas/mist/vapours/spray. Wash thoroughly after handling. Do not eat, drink or smoke when using this product. Wear protective gloves/protective clothing/eye protection/face protection.

**Response:** F SWALLOWED: Call a POISON CENTER or doctor/physician if you feel unwell. IF SWALLOWED: Rinse mouth. Do NOT induce vomiting. IF ON SKIN (or hair): Remove/Take off immediately all contaminated clothing. Rinse skin with water/shower. IF INHALED: Remove to fresh air and keep at rest in a position comfortable for breathing. IF IN EYES: Rinse cautiously with water for several minutes. Remove contact lenses, if present and easy to do. Continue rinsing. Immediately call a POISON CENTER or doctor/physician. Rinse mouth. Wash contaminated clothing before reuse. Absorb spillage to prevent material damage.

IMDG Code :

UN No. :

IATA :

**Disposal:---**

Hazard Pictogram(s) :-



GHS05