

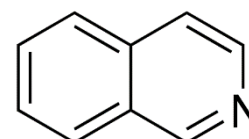


# Product Specification

cdhfinechemical.com

## ISO QUINOLINE TECH

PRODUCT CODE	127505
SYNONYMS	--
C.I. NO.	--
CASR NO.	(119-65-3)
ATOMIC OR MOLECULAR FORMULA	C <sub>9</sub> H <sub>7</sub> N
ATOMIC OR MOLECULAR WEIGHT	129.16
PROPERTIES	--



PARAMETER	LIMIT
-----------	-------

Description	Colourless to yellow to brown liquid.
Minimum assay (GC)	97.0%
Wt. per ml at 30 °C	1.099 g
Refractive Index (n) <sub>D</sub> <sup>20</sup>	1.623
Boiling range	242 – 243 °C

**Note(s): Assay (if applicable) method mentioned.**

### DANGER

**Hazard statements:** Fatal if inhaled. Toxic if swallowed. Harmful in contact with skin. May cause CANCER. May damage fertility. May damage the unborn child. Causes damage to organs through prolonged or repeated exposure. Very toxic to aquatic life with long lasting effects. Harmful to life in the soil

### Precautionary statements

**Prevention:** Wear respiratory protection. Wear protective gloves/clothing. Obtain special instructions before use. Do not breathe dust/fume/gas/mist/vapours/spray. Use only outdoors or in a well ventilated area. Wash hands thoroughly after handling. Do not eat, drink or smoke when using this product. Use personal protective equipment as required. Do not handle until all safety precautions have been read and understood.

**Response:** If exposed or concerned: Get medical attention advice. Wash contaminated clothing before reuse.

**IF INHALED:** Remove to fresh air and keep at rest in a position comfortable for breathing. Keep container tightly closed. Specific treatment: refer to Label or MSDS. **IF SWALLOWED:** Immediately call a POISON CENTER or doctor/physician. Get medical advice/attention if you feel unwell. **IF ON SKIN:** Gently wash with plenty of soap and water. Immediately call a POISON CENTER or doctor/physician. Call a POISON CENTER or doctor/physician if you feel unwell.

**Disposal:** Dispose of contents and container in accordance with relevant legislation.

IMDG Code : - 6.1/III

UN No. : - 2811

IATA : - 3

Hazard Pictogram(s) :-



GHS06



GHS08