

## Technical Information

### B.T.B. Lactose MiVeg Agar

#### Product Code :VM1861

**Application:-** Bromo Thymol Blue Lactose MiVeg Agar is a selective media, used for the detection and isolation of pathogenic *Staphylococci*.

#### Composition

Ingredients	Gms / Litre
MiVeg peptone No.3	5.0
MiVeg extract	3.0
Lactose	10.0
Bromo thymol blue	0.17
Agar	15.0
Final pH ( at 25°C)	8.6±0.2

\*\* Formula adjusted, standardized to suit performance parameters.

#### Principle & Interpretation

Bromo Thymol Blue Lactose MiVeg Agar is prepared with MiVeg peptone No.3 and MiVeg extract, which are vegetable origin which makes the medium free from BSE/TSE risks. This medium is the modification of BTBLactose Agar, which was designed by Chapman et al (1). Pathogenic *Staphylococci* are differentiated by their ability to grow at a high pH and in the presence of bromo thymol blue. Plates should be inoculated preferably by spread plate technique and incubated for about 36 hours at 35°C. Typical colonies are observed, like deep yellow about 90%, blue grey about 10%. Coliforms may grow but are differentiated by their appearance.

#### Methodology

Suspend 33.17 grams of powder media in 1000 ml distilled water. Mix thoroughly. Heat to boiling to dissolve the medium completely. Sterilize by autoclaving at 15 lbs pressure (121°C) for 15 minutes.

#### Quality Control

##### Physical Appearance

Greenish yellow coloured, homogeneous, free flowing powder.

##### Gelling

Firm, comparable with 1.5% Agar gel.

##### Colour and Clarity of prepared medium

Greenish blue coloured, clear to slightly opalescent gel forms in petri plates.

##### Reaction

Reaction of 3.32% w/v aqueous solution is pH 8.6± 0.2 at 25°C.

##### pH range

8.4-8.8

##### Cultural Response/Characteristics

Cultural characteristics observed after an incubation at 35-37°C for 24-72 hours

Organisms (ATCC)	Inoculums(CFU)	Growth	Recovery	Colour of colony
<i>Escherichia coli</i> (25922)	10 <sup>2</sup> -10 <sup>3</sup>	luxuriant	>70%	yellow
<i>Salmonella</i> serotype Typhi (6539)	10 <sup>2</sup> -10 <sup>3</sup>	luxuriant	>70%	blue/colourless
<i>Staphylococcus aureus</i> (6538)	10 <sup>2</sup> -10 <sup>3</sup>	luxuriant	>70%	golden yellow

*Staphylococcus epidermidis* (12228)

$10^2$ - $10^3$

luxuriant

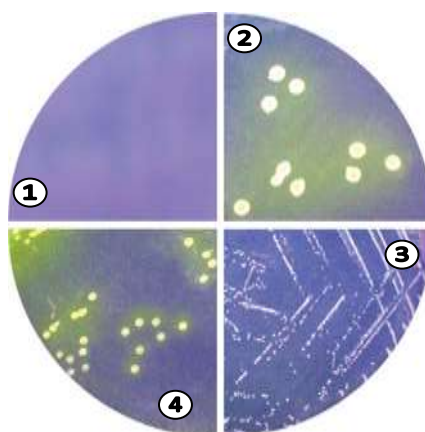
>70%

blue/colourless

## Storage and Shelf Life

**Dried Media:** Store below 30°C in tightly closed container and use before expiry date as mentioned on the label.

**Prepared Media:** 2-8° in sealable plastic bags for 2-5 days.



**VM1861 B.T.B. Lactose MiVeg Agar**

1. Control
2. *Escherichia coli*
3. *Salmonella* serotype Typhi
4. *Staphylococcus aureus*

## Further Reading

1. Chapman, Lieb, Bereus and Curcio, 1937, J. Bact., 33:533.

## Disclaimer :

- User must ensure suitability of the product(s) in their application prior to use.
- The product conform solely to the technical information provided in this booklet and to the best of knowledge research and development work carried at **CDH** is true and accurate
- **Central Drug House Pvt. Ltd.** reserves the right to make changes to specifications and information related to the products at any time.
- Products are not intended for human or animal diagnostic or therapeutic use but for laboratory, research or further manufacturing of diagnostic reagents extra.
- Statements contained herein should not be considered as a warranty of any kind, expressed or implied, and no liability is accepted for infringement of any patents. Do not use the products if it fails to meet specifications for identity and performance parameters.