

## Technical Information

### Emerson MiVeg Agar

#### Product Code :VM1325

**Application:-** Emerson MiVeg Agar is used for isolation and cultivation of *Actinomycetaceae*, *Streptomycetaceae*, fungi and Moulds.

#### Composition\*\*

Ingredients	Gms / Litre
MiVeg extract	4.0
Yeast extract	1.0
MiVeg peptone	4.0
Dextrose	10.0
Sodium chloride	2.5
Agar	20.0
Final pH (at 25°C )	7.0 ± 0.2

\*\* Formula adjusted, standardized to suit performance parameters

#### Principle & Interpretation

This medium is prepared by adding MiVeg peptone and MiVeg extract in place of Peptic digest of animal tissue and Beef extract thus making the medium free from BSE/TSE risks associated with animal based peptones. Emerson MiVeg Agar is the modification of medium formulated by Gottlieb (1) used for screening potent antibiotics producing organisms (2) who had modified the medium prepared by Emerson et al (1) which was used for the cultivation of moulds. The medium is also used for routine cultivation and maintenance of pure cultures. For the selective isolation of *Streptomyces* species, Cyclohexamide is incorporated in the medium which limits the growth of moulds.

MiVeg peptone, MiVeg extract supply nitrogenous substances. Yeast extract primarily provides the B-complex vitamins. Dextrose is the energy source whereas sodium chloride maintains the osmotic balance of the medium.

#### Methodology

Suspend 41.5 grams of powder media in 1000 ml distilled water. Mix thoroughly. Heat to boiling to dissolve the medium completely. Add cycloheximide 0.05 grams per litre, if desired. Dispense and sterilize by autoclaving at 15 lbs pressure (121°C) for 15 minutes.

#### Quality Control

##### Physical Appearance

Yellow coloured, may have slightly greenish tinge, homogeneous, free flowing powder.

##### Gelling

Firm, comparable with 2.0% Agar gel.

##### Colour and Clarity of prepared medium

Light amber coloured, clear to slightly opalescent gel forms in petri plates.

##### Reaction

Reaction of 4.15% w/v aqueous solution is pH 7.0 ± 0.2 at 25°C.

##### pH range

6.8-7.2

## Cultural Response/Characteristics

Cultural characteristics observed after an incubation at 30°C for 48 - 72 hours.

### Organisms (ATCC)

*Aspergillus niger* (16404)

*Saccharomyces cerevisiae* (9763)

*Streptomyces achromogenes* (12767)

*Streptomyces albus* (3004)

*Streptomyces lavendulae* (8664)

### Growth

luxuriant

luxuriant

luxuriant

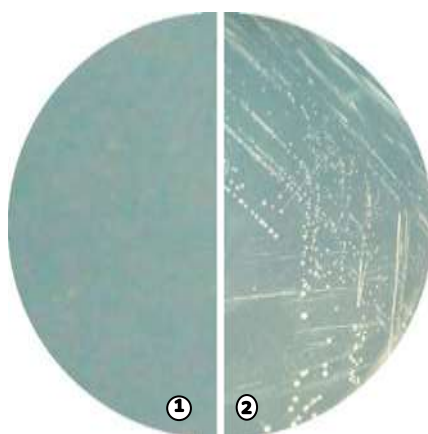
luxuriant

luxuriant

## Storage and Shelf Life

**Dried Media:** Store below 30°C in tightly closed container and use before expiry date as mentioned on the label.

**Prepared Media:** 2-8° in sealable plastic bags for 2-5 days.



VM1325 Emerson MiVeg Agar

(Against dark background)

1. Control

2. *Streptomyces lavendulae*

## Further Reading

1. Emerson, Whiffen, Bohonos and DeBoer, 1946, J. Bacteriol., 52:357.
2. Haynes, Wickerham and Hesseltine, 1955, Appl. Microbiol., 3:361.
3. Gottlieb, Bhattacharya, Anderson and Carter, 1948, J. Bacteriol., 55:409.
4. Schmitz and Woodside, 1955, Antibiot. Chemother., 5:652.

## Disclaimer :

- User must ensure suitability of the product(s) in their application prior to use.
- The product conform solely to the technical information provided in this booklet and to the best of knowledge research and development work carried at **CDH** is true and accurate
- **Central Drug House Pvt. Ltd.** reserves the right to make changes to specifications and information related to the products at any time.
- Products are not intended for human or animal diagnostic or therapeutic use but for laboratory, research or further manufacturing of diagnostic reagents extra.
- Statements contained herein should not be considered as a warranty of any kind, expressed or implied, and no liability is accepted for infringement of any patents. Do not use the products if it fails to meet specifications for identity and performance parameters.