

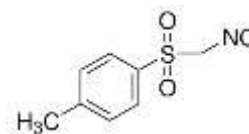


Product Specification

cdhfinechemical.com

p-TOLUENE SULPHONYL METHYL ISO CYANIDE

PRODUCT CODE	245560
SYNONYMS	(p-Tolylsulfonyl)methyl isocyanide, TosMIC, Tosylmethyl isocyanide)
C.I. NO.	--
CASR NO.	(36635-61-7)
ATOMIC OR MOLECULAR FORMULA	CH ₃ C ₆ H ₄ SO ₂ CH ₂ NC
ATOMIC OR MOLECULAR WEIGHT	195.24
PROPERTIES	--



PARAMETER	LIMIT
Description	White to yellow and faint orange to orange and faint beige to beige and faint brown to brown powder or chunks.
Solubility	Slightly soluble in water.
Minimum assay (HPLC)	98.0%
Melting range	109 – 113°C

Note(s): Assay (if applicable) method mentioned.

DANGER

Hazard statements : May cause respiratory irritation. Toxic if inhaled. Toxic in contact with skin. Toxic if swallowed. Causes mild skin irritation.

Precautionary statements

Prevention: Wear protective gloves/clothing. Use only outdoors or in a well ventilated area. Do not breathe dust/fume/gas/mist/vapours/spray. Avoid breathing dust/fume/gas /mist/vapours/spray. Do not eat, drink or smoke when using this product. Wash hands thoroughly after handling.

Response: Immediately call a POISON CENTER or doctor/physician. If skin irritation occurs, seek medical advice/attention. Keep container tightly closed. IF INHALED: Remove to fresh air and keep at rest in a position comfortable for breathing. IF ON SKIN: Gently wash with plenty of soap and water. Call a POISON CENTER or doctor/physician if you feel unwell. Specific treatment: refer to Label or MSDS. IF SWALLOWED: Immediately call a POISON CENTER or doctor/physician. Remove/Take off immediately all contaminated clothing.

Wash/Decontaminate removed clothing before reuse.

Disposal: Dissolve the chemical to be disposed, in water and allow it to run to waste, diluting with large quantities of water.

IMDG Code : --
UN No. : --
IATA : --

Hazard Pictogram(s) :-



GHS06