

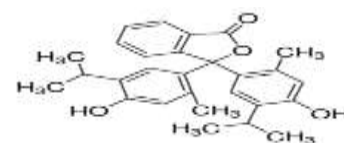


# Product Specification

cdhfinechemical.com

## THYMOLPHTHALEINE pH INDICATOR

<b>PRODUCT CODE</b>	<b>323035</b>
<b>SYNONYMS</b>	--
<b>C.I. NO.</b>	--
<b>CASR NO.</b>	<b>(125-20-2)</b>
<b>ATOMIC OR MOLECULAR FORMULA</b>	<b>C<sub>28</sub>H<sub>30</sub>O<sub>4</sub></b>
<b>ATOMIC OR MOLECULAR WEIGHT</b>	<b>430.55</b>
<b>PROPERTIES</b>	<b>White powder, insoluble in water, soluble in alcohol and acetone.</b>
<b>PARAMETER</b>	<b>LIMIT</b>
pH Transition Range	pH 9.3 - 10.5 Colourless - blue
Clarity of soln.	To pass the test.
Absorption maximum (pH 10.5)	592 - 596 nm
Absorptivity (A1% / 1 cm at $\lambda$ max, pH 10.5) (on dried sub.)	800 - 900
Sensitivity	To pass the test.
<b>MAXIMUM LIMIT OF IMPURITY</b>	
Loss on drying (at 110°C)	1.0%



<b>Note(s): Assay (if applicable) method mentioned</b>	
<b>WARNING</b> <b>Hazard statements:</b> Very toxic to aquatic life with long lasting effects. <b>Precautionary statements</b> <b>Prevention:</b> Avoid release to the environment. <b>Response:</b> Collect spillage.	IMDG Code : 9/III UN No. : 3077 IATA : 9
<b>Disposal:</b> The waste chemical should be buried on a stage approved site. The liquids should be absorbed on sand. The chemical should be mixed combustible solvent and burnt in a chemical incinerator equipped with burner and scrubber.	

Hazard Pictogram(s) :-  GHS09
--