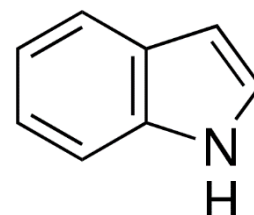


INDOLE CRYSTALLINE AR FOR ESTIMATION OF DNA

PRODUCT CODE	546095
SYNONYMS	(2,3-Benzopyrrole)
C.I. NO.	--
CASR NO.	(120-72-9)
ATOMIC OR MOLECULAR FORMULA	C₈H₇N
ATOMIC OR MOLECULAR WEIGHT	117.15
PROPERTIES	Volatile with steam. Soluble in hot water, ether, benzene. turns pink on storage



PARAMETER	LIMIT
Description	White to pale cream crystals or crystalline powder.
Solubility	10% solution in methanol is clear.
Minimum Assay (GC)	99.0%
Melting Point	51 – 53°C

MAXIMUM LIMIT OF IMPURITIES

Sulphated ash	0.01%
Copper (Cu)	0.0001%
Heavy metals (Pb)	0.0005%
Iron (Fe)	0.001%

Note(s) : Assay (if applicable) method mentioned.

DANGER

HAZARD STATEMENTS : Toxic if swallowed. Causes serious eye damage. Very toxic to aquatic life with long lasting effects.

PRECAUTIONARY STATEMENTS :

Prevention : Wash hands thoroughly after handling. Do not eat, drink or smoke when using this product. Avoid release to the environment.

Wear protective gloves/protective clothing/eyes protection/face protection.

Response : IF SWALLOWED: Immediately call a POISONCENTER or doctor/physician. IF IN EYES. rinse cautiously with water for several minutes. Remove contact lenses, if present and easy to do. Continue rinsing. Immediately call a POISON CENTER or doctor/physician. Rinse mouth. Collect spillage.

Disposal : Dissolve the chemical to be disposed, in water and allow it to run to waste, diluting with large quantities of water. The quantities greater than 10g should be dissolved in water and transferred to heavy metal waste drums for collection by specialist disposal company.

IMDG Code : 6.1/III

UN No. : 2811

IATA : 6.1

Hazard Pictogram(s) :-



GHS05

GHS06

GHS09

Replace Date 07-01-2021