

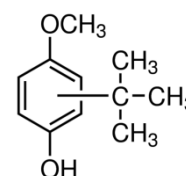


Product Specification

cdhfinechemical.com

BUTYLATED HYDROXY ANISOLE (B.H.A)

PRODUCT CODE	027515
SYNONYMS	2-tert-butyl-4-methoxyphenol, Butylhydroxyanisole.
C.I. NO.	--
CASR NO.	(25013-16-5)
ATOMIC OR MOLECULAR FORMULA	C₁₁H₁₆O₂
ATOMIC OR MOLECULAR WEIGHT	180.25
PROPERTIES	—
PARAMETER	LIMIT
Description	White or yellowish white or slightly pinkish white crystalline powder or waxy solid.
Solubility	10% solution in methanol is almost clear and colourless or almost colourless.
Identification	Passes tests.
Melting Point	56°- 63°C
Related substance	Passes test.
MAXIMUM LIMIT OF IMPURITIES	
Sulphated Ash	0.1%
Heavy metals	0.001%
Note(s) : Assay (if applicable) method mentioned.	
DANGER Hazard statements: May cause respiratory irritation. Harmful if swallowed. Causes mild skin irritation. Causes eye irritation. May cause allergic skin reaction May cause CANCER. Precautionary statements Prevention: Obtain special instructions before use. Do not handle until all safety precautions have been read and understood. Contaminated clothing should not be allowed out of the workplace. Avoid breathing dust/fume/gas/mist/vapours/spray. Use personal protective equipment as required. Do not eat, drink or smoke when using this product. Wash hands thoroughly after handling. Response: If eye irritation persists, get medical advice/attention. If exposed or concerned: Get medical attention advice. If skin irritation or rash occurs, seek medical advice/attention. If skin irritation occurs, seek medical advice/attention. IF ON SKIN: Gently wash with plenty of soap and water. Specific treatment: refer to Label or MSDS. IF IN EYES: Rinse cautiously with water for several minutes. Remove contact lenses, if present and easy to do. Continue rinsing. Wash contaminated clothing before reuse. Disposal: The chemical should be mixed with combustible solvent and burnt in a chemical incinerator equipped with burner and scrubber.	IMDG Code : UN No. : IATA :
Hazard Pictogram(s) :-	
 	
GHS07 GHS08	



Replace Date 14-Mar.-2019