

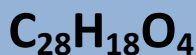


## Product Specification

### $\alpha$ -NAPHTHOLPHTHALEIN

#### pH INDICATOR

PRODUCT CODE	020076
SYNONYMS	--
C.I. NO.	--
CASR NO.	(596-01-0)
ATOMIC OR MOLECULAR FORMULA	$C_{28}H_{18}O_4$
ATOMIC OR MOLECULAR WEIGHT	418.45
PROPERTIES	Practically insoluble in water.Soluble in alcohol.



PARAMETER	LIMIT
pH Transition Range	pH 7.1 - 8.3 Pink brownish - Blue
Absorption maximum	472 - 477 nm
$\lambda_1$ (pH 7.1)	649 - 654 nm
$\lambda_2$ (pH 8.3)	
Absorptivity (A1% / 1 cm at $\lambda_1$ (pH 7.1);on dried substance)	100 - 150
Absorptivity (A1% / 1 cm at $\lambda$ (pH 8.3);on dried substance)	320 - 420

#### MAXIMUM LIMIT OF IMPURITY

Loss on drying (at 110°C)	< 5.0%
---------------------------	--------

Note(s) : Assay (if applicable) method mentioned.

#### WARNING

Hazard statements : Not hazardous. No hazards.

Precautionary statements

Prevention: -----

Response: ---

Disposal: --

Hazard Pictogram(s) :--

IMDG Code : --

UN No. :--

IATA :--