

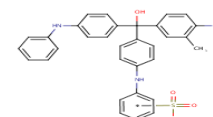


# Product Specification

cdhfinechemical.com

## ALKALI BLUE (6B) (pH INDICATOR)

PRODUCT CODE	004300
SYNONYMS	--
C.I. NO.	42750
CASR NO.	(30586-13-1)
ATOMIC OR MOLECULAR FORMULA	$C_{32}H_{28}N_3NaO_4S$
ATOMIC OR MOLECULAR WEIGHT	573.65
PROPERTIES	--



PARAMETER	LIMIT
-----------	-------

Description	Dark blue powder.
Solubility	0.1% Solution in ethanol is clear & blue colour.
Dye content (by spectrophotometry)	Min 50%
Transition range pH 11.5 – 13.0	Blue -pink violet
Absorption maxima	596 – 606 nm
Absorptivity 1%/ 1cm, in 95% ethanol	Min 750

### MAXIMUM LIMIT OF IMPURITY

Loss on drying (at 110°C)	5%
---------------------------	----

**Note(s):** Assay (if applicable) method mentioned.

### WARNING

**Hazard statements:** May cause respiratory irritation. Causes skin irritation. Causes serious eye irritation.

### Precautionary statements

**Prevention:** Avoid breathing dust/fume/gas/mist/vapours/spray. Wash thoroughly after handling. Use only outdoors or in a well-ventilated area. Wear protective gloves/protective clothing/eye protection/face protection.

**Response:** IF INHALED: Remove to fresh air and keep at rest in a position comfortable for breathing. IF IN EYES: Rinse cautiously with water for several minutes. Remove contact lenses, if present and easy to do. Continue rinsing. Call a POISON CENTER or doctor/physician if you feel unwell. If eye irritation persists: Get medical advice/attention.

IMDG Code : --  
UN No. : --  
IATA : --

**Disposal:** Dissolve the chemical to be disposed, in water and allow it to run to waste, diluting with large quantities of water. The quantities greater than 10g should be dissolved in water and transferred to heavy metal waste drums for collection by specialist disposal company.

**Hazard Pictogram(s):**



GHS07