

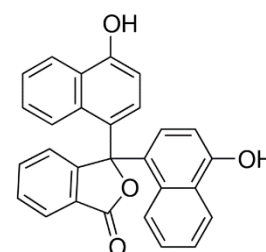


# Product Specification

cdhfinechemical.com

## $\alpha$ -NAPHTHOLPHTHALEIN pH INDICATOR

<b>PRODUCT CODE</b>	<b>020076</b>
<b>SYNONYMS</b>	--
<b>C.I. NO.</b>	--
<b>CASR NO.</b>	<b>(596-01-0)</b>
<b>ATOMIC OR MOLECULAR FORMULA</b>	<b>C<sub>28</sub>H<sub>18</sub>O<sub>4</sub></b>
<b>ATOMIC OR MOLECULAR WEIGHT</b>	<b>418.45</b>
<b>PROPERTIES</b>	<b>Practically insoluble in water.Soluble in alcohol.</b>



<b>PARAMETER</b>	<b>LIMIT</b>
pH Transition Range	pH 7.1 - 8.3 Pink brownish - Blue
Absorption maximum	472 - 477 nm
$\lambda_1$ (pH 7.1)	649 - 654 nm
$\lambda_2$ (pH 8.3)	
Absorptivity (A1% / 1 cm at $\lambda_1$ (pH 7.1);on dried substance)	100 - 150
Absorptivity (A1% / 1 cm at $\lambda$ (pH 8.3);on dried substance)	320 - 420

### MAXIMUM LIMIT OF IMPURITY

Loss on drying (at 110°C)	< 5.0%
---------------------------	--------

**Note(s) : Assay (if applicable) method mentioned.**

### WARNING

**Hazard statements :**Not hazardous. No hazards.

**Precautionary statements**

**Prevention: -----**

**Response: ---**

IMDG Code : --

UN No. : --

IATA :--

**Disposal: --**

**Hazard Pictogram(s) :--**