

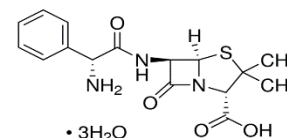


# Product Specification

cdhfinechemical.com

## AMPICILLIN TRIHYDRATE FOR LAB USE

<b>PRODUCT CODE</b>	<b>093000</b>
<b>SYNONYMS</b>	<b>D-(-)<math>\alpha</math> Aminobenzylpenicillin.</b>
<b>C.I. NO.</b>	--
<b>CASR NO.</b>	<b>(7177-48-2)</b>
<b>ATOMIC OR MOLECULAR FORMULA</b>	<b>C<sub>16</sub>H<sub>19</sub>N<sub>3</sub>O<sub>4</sub>S.3H<sub>2</sub>O</b>
<b>ATOMIC OR MOLECULAR WEIGHT</b>	<b>403.46</b>
<b>PROPERTIES</b>	<b>Store at 2-8°C</b>



<b>PARAMETER</b>	<b>LIMIT</b>
------------------	--------------

Description	White to off white powder.
Solubility	5% Solution in 1M HCl is clear and colourless to faint yellow.
Minimum assay (anhydrous HPLC)	96-100.5%
Melting range	198 – 200°C

### MAXIMUM LIMIT OF IMPURITY

Moisture content (By KF)	15.0%
--------------------------	-------

**Note(s) : Assay (if applicable) method mentioned.**

#### WARNING

**Hazard statements :** Harmful if swallowed. May cause allergic skin reaction. May causedamage to organs through prolonged or repeated exposure. Harmful to aquatic life withlong lasting effects.

#### Precautionary statements

**Prevention:** Wash hands thoroughly after handling. Do not breathe dust/fume/gas/mist/vapours/spray. Avoid breathing dust/fume/gas/mist/vapours /spray. Do not eat, drinkor smoke when using this product. Contaminated clothing should not be allowed out of theworkplace.

**Response:** If skin irritation or rash occurs, seek medical advice/attention. Get medicaladvice/attention if you feel unwell. IF ON SKIN: Gently wash with plenty of soap and water.Specific treatment: refer to Label or MSDS. Wash contaminated clothing before reuse.

IMDG Code :

UN No. :

IATA :

**Disposal:** Dissolve the chemical to be disposed, in water and allow it to run to waste, diluting with large quantities ofwater. The quantities greater than 10g should be dissolved in water and transferred to heavy metal waste drums forcollection by specialist disposal company. The waste chemical should be buried on a stage approved site .The liquidsshould be absorbed on sand.

Hazard Pictogram(s) :-



GHS07



GHS08

Replace Date 08-Sep.-2018