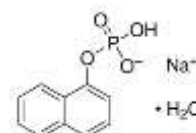


SODIUM-1-NAPHTHYL PHOSPHATE MONOHYDRATE AR

PRODUCT CODE	644585
SYNONYMS	(1-Naphthyl phosphate mono Sodium Salt)
C.I. NO.	--
CASR NO.	(81012-89-7)
ATOMIC OR MOLECULAR FORMULA	$C_{10}H_8NaO_4P \cdot H_2O$
ATOMIC OR MOLECULAR WEIGHT	264.15
PROPERTIES	--



PARAMETER	LIMIT
-----------	-------

Description	White to light tan crystals or powder.
Solubility	33.3 mg soluble in 1 ml of water.
Minimum Assay (NaOH Titration)	99.0%
pH (10% in water at 25°C)	3.00-4.00
Melting range	189-191°C

MAXIMUM LIMIT OF IMPURITY

Water (K.F.)	10.0%
--------------	-------

Note(s) : 1] Assay (if applicable) method mentioned.
2] Storage 0 – 8°C

WARNING

HAZARD STATEMENTS : May cause drowsiness and dizziness. Causes mild skin irritation. Causes eye irritation. May cause allergic skin reaction.

PRECAUTIONARY STATEMENTS :

Prevention : Contaminated clothing should not be allowed out of the workplace. Avoid breathing dust/fume/gas/mist/vapours/spray. Wash hands thoroughly after Handling .

Response : If skin irritation occurs, seek medical advice/attention. If skin irritation or rash occurs, seek medical advice/attention. If eye irritation persists, get medical advice/attention. IF IN EYES: Rinse cautiously with water for several minutes. Remove contact lenses, if present and easy to do. Continue rinsing. Specific treatment: refer to Label or MSDS. IF ON SKIN: Gently wash with plenty of soap and water. Wash contaminated clothing before reuse.

Disposal : Dissolve the chemical to be disposed, in water and allow it to run to waste, diluting with large quantities of water. The chemical should be mixed with combustible solvent and burnt in a chemical incinerator equipped with burner and scrubber.

Hazard Pictogram(s) :-



GHS07

IMDG Code : --
UN No. : --
ATA : --