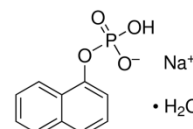


## SODIUM-1-NAPHTHYL PHOSPHATE MONOHYDRATE AR

|                                    |   |
|------------------------------------|---|
| <b>PRODUCT CODE</b>                | <b>644585</b>   |
| <b>SYNONYMS</b>                    | <b>(1-Naphthyl phosphate mono Sodium Salt )</b>                   |
| <b>C.I. NO.</b>                    | --  |
| <b>CASR NO.</b>                    | <b>(81012-89-7)</b>   |
| <b>ATOMIC OR MOLECULAR FORMULA</b> | <b>C<sub>10</sub>H<sub>8</sub>NaO<sub>4</sub>P.H<sub>2</sub>O</b> |
| <b>ATOMIC OR MOLECULAR WEIGHT</b>  | <b>264.15</b>   |
| <b>PROPERTIES</b>                  | <b>264.15</b>   |



| PARAMETER | LIMIT |
|-----------|-------|
|-----------|-------|

|                                |  |
|--------------------------------|--|
| Description                    | White to light tan crystals or powder. |
| Solubility                     | 33.3 mg soluble in 1 ml of water.      |
| Minimum Assay (NaOH Titration) | 99.0%                                  |
| pH (10% in water at 25°C)      | 3.00-4.00                              |
| Melting range                  | 189-191°C                              |

### MAXIMUM LIMIT OF IMPURITY

|              |       |
|--------------|-------|
| Water (K.F.) | 10.0% |
|--------------|-------|

**Note(s) :** 1] Assay (if applicable) method mentioned.  
2] Storage 0 – 8°C

### WARNING

**HAZARD STATEMENTS :** May cause drowsiness and dizziness. Causes mild skin irritation. Causes eye irritation. May cause allergic skin reaction.

### PRECAUTIONARY STATEMENTS :

**Prevention :** Contaminated clothing should not be allowed out of the workplace. Avoid breathing dust/fume/gas/mist/vapours/spray. Wash hands thoroughly after Handling .

**Response :** If skin irritation occurs, seek medical advice/attention. If skin irritation or rash occurs, seek medical advice/attention. If eye irritation persists, get medical advice/attention. IF IN EYES: Rinse cautiously with water for several minutes. Remove contact lenses, if present and easy to do. Continue rinsing. Specific treatment: refer to Label or MSDS. IF ON SKIN: Gently wash with plenty of soap and water. Wash contaminated clothing before reuse.

IMDG Code : --

UN No. : --

IATA : --

**Disposal :** Dissolve the chemical to be disposed, in water and allow it to run to waste, diluting with large quantities of water. The chemical should be mixed with combustible solvent and burnt in a chemical incinerator equipped with burner and scrubber.

**Hazard Pictogram(s) :-**



GHS07