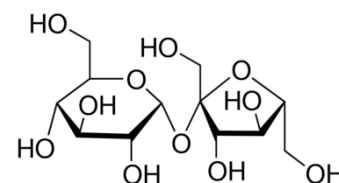


## SUCROSE AR/ACS

<b>PRODUCT CODE</b>	<b>645105</b>
<b>SYNONYMS</b>	<b>(Saccharose)</b>
<b>C.I. NO.</b>	--
<b>CASR NO.</b>	<b>(57-50-1)</b>
<b>ATOMIC OR MOLECULAR FORMULA</b>	<b>C<sub>12</sub>H<sub>22</sub>O<sub>11</sub></b>
<b>ATOMIC OR MOLECULAR WEIGHT</b>	<b>342.30</b>
<b>PROPERTIES</b>	<b>Solutions are neutral to litmus. Combustible.</b>
<b>PARAMETER</b>	<b>LIMIT</b>
Description	Colourless crystals /crystalline powder.
Solubility	1 M solution in water is clear and colourless.
Identification	Passes tests.
Minimum Assay (BY GC)	99.5%
pH (of 1M soln. in water)	5 – 7
Specific rotation $[\alpha]_D^{20}$ (C=26% in water)	+ 65.5° to + 67.5°
<b>MAXIMUM LIMIT OF IMPURITIES</b>	
Sulphated ash	0.01%
Loss on drying (at 100°C)	0.1%
Insoluble matter	0.003%
Acidity or alkalinity	Passes test.
Chloride (Cl)	0.005%
Nitrogen compounds (N)	0.002%
Sulphate (SO <sub>4</sub> )	0.005%
Sulphites	Passes test.
Barium (Ba)	Passes test.
Cadmium (Cd)	0.0005%
Calcium (Ca)	0.001%
Copper (Cu)	0.0005%
Dextrins	Passes test.
Glucose & invert sugar	Passes test.
Heavy metals (as Pb)	0.0005%
Iron (Fe)	0.0005%
Nickel (Ni)	0.0005%
Zinc (Zn)	0.0005%
Reducing sugars (C <sub>6</sub> H <sub>12</sub> O <sub>6</sub> )	0.01%
<b>Note(s) : Assay (if applicable) method mentioned.</b>	





# Product Specification

cdhfinechemical.com

<b>WARNING</b> <b>Hazard statements</b> :Not hazardous. No hazards. <b>Precautionary statements</b> <b>Prevention:</b> ----- <b>Response:</b> ---		IMDG Code : UN No. : IATA :
<b>Disposal</b> :Dissolve the chemical to be disposed, in water and allow it to run to waste, diluting with large quantities of water. This chemical can be disposed off as normal industrial waste.		
Hazard pictogram (s) :		

Replace date 01-Aug-2020