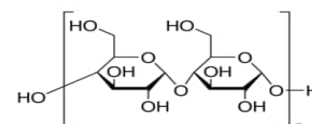


STARCH WHEAT (INSOLUBLE)

PRODUCT CODE	224055
SYNONYMS	Starch native from wheat
C.I. NO.	--
CASR NO.	(9005-25-8)
ATOMIC OR MOLECULAR FORMULA	--
ATOMIC OR MOLECULAR WEIGHT	--
PROPERTIES	--



PARAMETER	LIMIT
Description	White powder.
Solubility	Insoluble in water.
pH of (10% slurry in water at 25°C)	4.0-7.0

MAXIMUM LIMIT OF IMPURITIES

Reducing sugars (as maltose)	0.5%
Heavy metals (as Pb)	0.001%
Sulphated ash	1.0%
Loss on drying	13%

Note(s) : Assay (if applicable) method mentioned.

WARNING

Hazard statements : Not hazardous. No hazards.

Precautionary statements

Prevention: -----

Response: ---

Disposal:-----

Hazard Pictogram(s) :-----

IMDG Code :
UN No. :
IATA :

Revised Date 31.12.2022