



# Product Specification

cdhfinechemical.com

## STARCH RICE (INSOLUBLE)

**PRODUCT CODE** 223945

**SYNONYMS** --

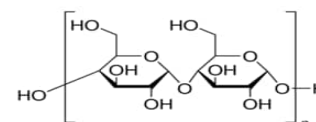
**C.I. NO.** --

**CASR NO.** 9005-25-8

**ATOMIC OR MOLECULAR FORMULA** --

**ATOMIC OR MOLECULAR WEIGHT** --

**PROPERTIES** --



### PARAMETER LIMIT

Description A very fine, white powder.

Solubility Practically insoluble in cold water and in alcohol.

pH (10% Suspension) 5.9 – 7.0

### MAXIMUM LIMIT OF IMPURITIES

Sensitivity to iodine Passes test

Moisture content 7.5 – 13.0%

Sulphated ash 0.6%

**Note(s): Assay (if applicable) method mentioned.**

### WARNING

**Hazard statements:** - Not hazardous. No hazards.

**Precautionary statements**

**Prevention:** -----

**Response:** -----

**Disposal:** -----

**Hazard Pictogram(s):** -----

IMDG Code :-

UN No. :-

IATA :-

Revised Date 31.12.2022