

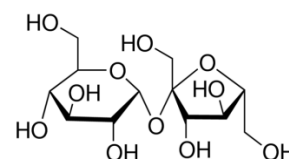


# Product Specification

cdhfinechemical.com

## SUCROSE

<b>PRODUCT CODE</b>	<b>030299</b>
<b>SYNONYMS</b>	<b>(Saccharose)</b>
<b>C.I. NO.</b>	--
<b>CASR NO.</b>	<b>(57-50-1)</b>
<b>ATOMIC OR MOLECULAR FORMULA</b>	<b>C<sub>12</sub>H<sub>22</sub>O<sub>11</sub></b>
<b>ATOMIC OR MOLECULAR WEIGHT</b>	<b>342.30</b>
<b>PROPERTIES</b>	<b>Sweet taste, odourless and combustible.</b>



<b>PARAMETER</b>	<b>LIMIT</b>
Description	Colourless crystals/crystalline powder.
Solubility	10% solution in water is clear and colourless.
Minimum assay (By GC)	99.0%
Specific rotation $[\alpha]_D^{20}$ (C=26% in water)	+ 65.5° to + 67.5°

### MAXIMUM LIMIT OF IMPURITIES

Sulphated ash	0.02%
Reducing sugars	0.02%
Acidity or alkalinity	0.2 ml N/1%
Lead (Pb)	0.0004%

**Note(s) : Assay (if applicable) method mentioned.**

#### WARNING

**Hazard statements :** Not hazardous. No hazards.

**Precautionary statements**

**Prevention:** -----

**Response:** ---

IMDG Code :

UN No. :

IATA :

**Disposal :** Dissolve the chemical to be disposed, in water and allow it to run to waste, diluting with large quantities of water. This chemical can be disposed off as normal industrial waste.

Hazard pictogram (s) :

Replace Date 21-July-2023