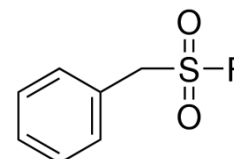


PHENYL METHANESULPHONYL FLUORIDE

PRODUCT CODE	189835
SYNONYMS	(PMSF), (Phenylmethysulphonyl fluoride), (α -Toluenesulphonyl fluoride)
C.I. NO.	--
CASR NO.	(329-98-6)
ATOMIC OR MOLECULAR FORMULA	$C_7H_7FO_2S$
ATOMIC OR MOLECULAR WEIGHT	174.19
PROPERTIES	--



PARAMETER	LIMIT
Description	White crystalline powder/needles.
Solubility	Soluble in iso-propyl alcohol.
Minimum assay (acidimetric)	99.0%
Melting range	90-92°C

MAXIMUM LIMIT OF IMPURITIES	
Sulphated ash	0.1%
Heavy metals(Pb)	0.001%

Note(s) : Assay (if applicable) method mentioned.

<p>DANGER</p> <p>Hazard statements: Toxic if swallowed. May be corrosive to metals. Causes severe skin burns and eye damage. Harmful to aquatic life with long lasting effects.</p> <p>Precautionary statements</p> <p>Prevention: Wear protective gloves/clothing and eye/face protection. Wash thoroughly after handling. Wash hands thoroughly after handling. Do not eat, drink or smoke when using this product. Do not breathe dust or mist.</p> <p>Response: IF INHALED: Remove to fresh air and keep at rest in a position comfortable for breathing. Immediately call a POISON CENTER or doctor/physician. IF SWALLOWED: Rinse mouth. Do NOT induce vomiting. Wash contaminated clothing before reuse. IF IN EYES: Rinse cautiously with water for several minutes. Remove contact lenses, if present and easy to do. Continue rinsing. Specific treatment: refer to Label or MSDS. IF SWALLOWED: Immediately call a POISON CENTER or doctor/physician. If on skin or hair: remove/take off immediately all contaminated clothing. Rinse with water/shower. Absorb spillage to prevent material damage.</p> <p>Disposal: Dispose of contents and container in accordance with relevant legislation.</p>	<p>IMDG Code : 6.1(8)/II</p> <p>UN No. : 2928</p> <p>IATA : 6.1(8)</p>
--	--

Hazard Pictogram(s) :--



GHS06



GHS05

Replace Date 18-Dec.-2019