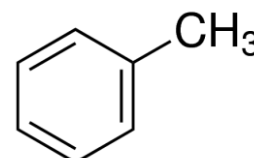


## TOLUENE AR

<b>PRODUCT CODE</b>	<b>661475</b>
<b>SYNONYMS</b>	<b>Methyl benzene</b>
<b>C.I. NO.</b>	<b>N/A</b>
<b>CASR NO.</b>	<b>108-88-3</b>
<b>ATOMIC OR MOLECULAR FORMULA</b>	<b>C<sub>7</sub>H<sub>8</sub></b>
<b>ATOMIC OR MOLECULAR WEIGHT</b>	<b>92.14</b>
<b>PROPERTIES</b>	--



<b>PARAMETER</b>	<b>LIMIT</b>
Description	A clear liquid, not more than 10 Hazen units in colour with a characteristic odour.
Solubility	Miscible with absolute industrial methylated spirit forming a clear & colourless solution.
Minimum assay (By GC)	99.5%
Wt. per ml at 20°C	0.863 - 0.866 g
Refractive index (n) <sub>D</sub> <sup>20</sup>	1.494 - 1.497
Boiling Range (110 - 111°C) (within 0.4 in the range)	Min. 95.0%

### MAXIMUM LIMIT OF IMPURITIES

Evaporation residue	0.001%
Water	0.03%
Acidity (HCL)	0.0005%
Alkalinity (NH <sub>3</sub> )	0.0002%
Benzene (C <sub>6</sub> H <sub>6</sub> )	0.2%
Copper (Cu)	0.00005%
Iron (Fe)	0.0001%
Lead (Pb)	0.00005%
Organic impurities	Passes acid wash test.
Sulphur compounds	0.003%
Thiophene homologues (C <sub>4</sub> H <sub>4</sub> S)	0.0002%

**Note(s):** Assay (if applicable) method mentioned.

### DANGER

**HAZARD STATEMENTS:** May be fatal if swallowed and enters airways. May cause respiratory irritation. May cause drowsiness and dizziness. Highly flammable liquid and vapour. Toxic if inhaled. Harmful if swallowed. Causes skin irritation. Causes serious eye irritation. Suspected of damaging the unborn child. May cause damage to organs through prolonged or repeated exposure by inhalation.

### PRECAUTIONARY STATEMENTS

**Prevention:** Wash hands thoroughly after handling. Ground/bond container and receiving equipment. Do not eat, drink or smoke when using this product. Wash thoroughly after handling. Do not breathe dust/fume/gas/mist/vapours/spray. Avoid breathing dust/fume/gas/mist/vapours/spray. Use only outdoors or in a well-ventilated area. Use only non-sparking tools. Use personal protective equipment as required. Keep container tightly closed. Do not handle until all safety precautions have been read and understood. Obtain special instructions before use. Wear protective gloves and eye/face protection. Keep away from heat/sparks/open flame - No smoking. Take precautionary measures against static discharge. Use explosion-proof electrical/ventilating/lighting/equipment

**Response:** If exposed or concerned: Get medical attention advice. IF INHALED: Remove to fresh air and keep at

IMDG Code : 3/II  
UN No. : 1294  
IATA : 3



# Product Specification

cdhfinechemical.com

rest in a position comfortable for breathing. Wear eye/face protection. If eye irritation persists, get medical advice/attention. If skin irritation occurs, seek medical advice/attention. IF IN EYES: Rinse cautiously with water for several minutes. Remove contact lenses, if present and easy to do. Continue rinsing. IF SWALLOWED: Rinse mouth. Do NOT induce vomiting. If on skin or hair: remove/take off immediately all contaminated clothing. Rinse with water/shower. Get medical advice/attention if you feel unwell. In case of fire, use foam for extinction. Specific treatment: refer to Label or MSDS. Call a POISON CENTER or doctor/physician if you feel unwell. IF ON SKIN: Gently wash with plenty of soap and water. Immediately call a POISON CENTER or doctor/physician. Remove/Take off immediately all contaminated clothing. Wash/Decontaminate removed clothing before reuse.

**Disposal:** Allow to evaporate in safe open area (applicable for small quantities). The chemical should be burnt in a chemical incinerator equipped with burner and scrubber. If the volumes are larger than 500ml and no incinerator and site of evaporation is not available then transfer the waste chemical to waste solvent drum for collection by specialist disposal company.

Hazard Pictogram(s) :-



GHS02



GHS06



GHS08

Replace Date : 11-May-2020