

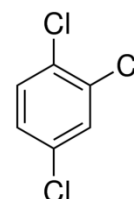


# Product Specification

cdhfinechemical.com

## 1,2,4-TRICHLOROBENZENE FOR SYNTHESIS

<b>PRODUCT CODE</b>	246695
<b>SYNONYMS</b>	--
<b>C.I. NO.</b>	--
<b>CASR NO.</b>	(120-82-1)
<b>ATOMIC OR MOLECULAR FORMULA</b>	C <sub>6</sub> H <sub>3</sub> Cl <sub>3</sub>
<b>ATOMIC OR MOLECULAR WEIGHT</b>	181.45
<b>PROPERTIES</b>	Toxic by ingestion and inhalation.



PARAMETER	LIMIT
Description	Clear and colourless liquid, (20 APHA max.)
Solubility	Miscible with ether, benzene and carbon disulphide.
Minimum assay (GC)	99.0%
Wt. per ml at 20 <sup>o</sup> C	1.454 – 1.455 g
Refractive index (n) <sub>D</sub> <sup>20</sup>	1.571 – 1.572
Boiling range	212-214 °C

### MAXIMUM LIMIT OF IMPURITIES

Water	0.05%
1,2,3-trichlorobenzene	1.0%

**Note(s) : Assay (if applicable) method mentioned.**

### HAZARD WARNING

Harmful if swallowed. Causes skin irritation. May cause an allergic skin reaction. Causes serious eye irritation. May cause respiratory irritation. Toxic to aquatic life with long lasting effects.

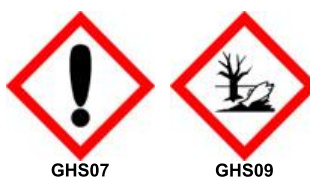
### PRECAUTIONARY STATEMENTS

Prevention :Avoid breathing dust/ fume/ gas/ mist/ vapours / spray. Wash ... thoroughly after handling. Do not eat, drink or smoke when using this product. Use only outdoors or in a well- ventilated area. Contaminated work clothing should not be allowed out of the workplace. Avoid release to the environment. Wear protective gloves/protective clothing/eye protection/face protection.

Response: IF SWALLOWED: Call a POISON CENTER or doctor/physician if you feel unwell. IF ON SKIN: Wash with plenty of soap and water. IF INHALED: Remove victim to fresh air and keep at rest in a position comfortable for breathing. IF IN EYES: Rinse cautiously with water for several minutes. Remove contact lenses, if present and easy to do. Continue rinsing. Call a POISON CENTER or doctor/physician if you feel unwell. Rinse mouth. If skin irritation occurs: Get medical advice/attention. If skin irritation or rash occurs: Get medical advice/attention. If eye irritation persists: Get medical advice/attention. Take off contaminated clothing and wash before re- use. Wash contaminated clothing before reuse. Collect spillage.

**Disposal :** The quantities greater than 10g should be dissolved in dilute acid and transferred to heavy metal waste drum for collection by specialist disposal company.

Hazard Pictogram(s) :



GHS07

GHS09

IMDG Code : 6.1/III  
UN No. : 2321  
IATA : 6.1