

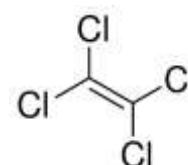


# Product Specification

cdhfinechemical.com

## TETRACHLOROETHYLENE FOR HPLC & SPECTROSCOPY

<b>PRODUCT CODE</b>	<b>774000</b>
<b>SYNONYMS</b>	<b>Perchloroethylene</b>
<b>C.I. NO.</b>	<b>N/A</b>
<b>CASR NO.</b>	<b>127-18-4</b>
<b>ATOMIC OR MOLECULAR FORMULA</b>	<b>Cl<sub>2</sub>C:CCl<sub>2</sub></b>
<b>ATOMIC OR MOLECULAR WEIGHT</b>	<b>165.83</b>
<b>PROPERTIES</b>	<b>Non-flammable</b>



<b>PARAMETER</b>	<b>LIMIT</b>
Description	A clear & colourless liquid.
Solubility	Miscible with absolute industrial methylated spirit (methanol) forming clear and colourless solution.
Minimum assay (By GC)	99.5%
Wt. per ml at 20°C	1.621 - 1.622 g
Refractive index (n) <sub>D</sub> <sup>20</sup>	1.505 - 1.506

<b>MAXIMUM LIMIT OF IMPURITIES</b>	
Non volatile matter	0.001%
Water	0.01%
Acidity (HCl)	0.001%
Alkalinity (NH <sub>3</sub> )	0.0001%
Aldehyde & ketone (CH <sub>3</sub> ) <sub>2</sub> CO	0.005%
Minimum Transmission in a 1.0 cm cell at :	
290 nm	10%
300 nm	75%
320 nm	85%
350 nm	90%
400 nm	95%

**Note(s) :** Assay (if applicable) method mentioned.

<b>DANGER</b> <b>HAZARD STATEMENTS :</b> May cause respiratory irritation. May cause drowsiness and dizziness. May be harmful if swallowed. Causes skin irritation. Causes eye irritation. Suspected of causing cancer. May damage fertility. Toxic to aquatic life with long lasting effects.	IMDG Code : UN No. : IATA :
<b>PRECAUTIONARY STATEMENTS :</b> <b>Prevention :</b> Do not handle until all safety precautions have been read and understood. Obtain special instructions before use. Wash thoroughly after handling. Use personal protective equipment as required. Wash hands thoroughly after handling. <b>Response :</b> IF IN EYES: Rinse cautiously with water for several minutes. Remove contact lenses, if present and easy to do. Continue rinsing. If exposed or concerned: Get medical attention advice. If eye irritation persists, get medical advice/attention. If skin irritation occurs, seek medical advice/attention. Remove/Take off immediately all contaminated clothing. IF SWALLOWED: Call a POISON CENTER or doctor/physician if you feel unwell. IF ON SKIN: Gently wash with plenty of soap and water. Wash/Decontaminate removed clothing before reuse.	

**Disposal:** -----

Hazard Pictogram(s) :-



# Product Specification

cdhfinechemical.com



GHS07



GHS08



GHS09

Replace date 14-Nov-2024