

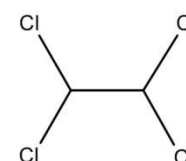


# Product Specification

cdhfinechemical.com

## 1,1,2,2-TETRA CHLOROETHANE FOR SYNTHESIS

PRODUCT CODE	026198
SYNONYMS	N/A
C.I. NO.	N/A
CASR NO.	79-34-5
ATOMIC OR MOLECULAR FORMULA	$\text{CHCl}_2\text{CHCl}_2$
ATOMIC OR MOLECULAR WEIGHT	167.85
PROPERTIES	Nonflammable



### PARAMETER LIMIT

Description	A clear liquid, colour not more than 20 APHA.
Solubility	Miscible with methanol.
Minimum assay (By GC)	97.0%
Wt.per ml at 20°C	About 1.59 g

Note(s) : 1] Assay (if applicable) method mentioned.

#### DANGER

**Hazard statements:** Toxic if swallowed. Very toxic to aquatic life.

#### Precautionary statements

**Prevention:** Do not eat, drink or smoke when using this product. Wash hands thoroughly after handling.

**Response:** IF SWALLOWED: Immediately call a POISON CENTER or doctor/physician. Specific treatment: refer to Label or MSDS.

**Disposal:** Dispose of contents and container in accordance with relevant legislation.

IMDG Code : 6.1/II  
UN No. : 1702  
IATA : 6.1

Hazard Pictogram(s) :



GHS06



GHS09