

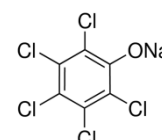


Product Specification

cdhfinechemical.com

SODIUM PENTACHLOROPHENATE

| | |
|------------------------------------|---------------------------------------|
| PRODUCT CODE | 221415 |
| SYNONYMS | (Pentachlorophenol Sodium Salt) |
| C.I. NO. | -- |
| CASR NO. | 131-52-2 |
| ATOMIC OR MOLECULAR FORMULA | C₆Cl₅ONa |
| ATOMIC OR MOLECULAR WEIGHT | 288.32 |
| PROPERTIES | -- |



| PARAMETER | LIMIT |
|--|-----------------------------------|
| Description | Buff coloured crystalline powder. |
| Solubility | Soluble in water. |
| Minimum assay (acidimetric, on anhydrous substance) | 98.0% |
| Melting point | 300°C |

MAXIMUM LIMIT OF IMPURITY

| | |
|------------------|-----------|
| Total Impurities | 15% water |
|------------------|-----------|

Note(s) : Assay (if applicable) method mentioned.

DANGER

Hazard statements: Fatal if inhaled. Toxic if swallowed. Harmful in contact with skin. May cause CANCER. May damage fertility. May damage the unborn child. Causes damage to organs through prolonged or repeated exposure. Very toxic to aquatic life with long lasting effects. Harmful to life in the soil

Precautionary statements

Prevention: Wear respiratory protection. Wear protective gloves/clothing Obtain special instructions before use. Do not breathe dust/fume/gas/mist/vapours/spray. Use only outdoors or in a well ventilated area. Wash hands thoroughly after handling. Do not eat, drink or smoke when using this product. Use personal protective equipment as required. Do not handle until all safety precautions have been read and understood.

Response: If exposed or concerned: Get medical attention advice. Wash contaminated clothing before reuse.

IF INHALED: Remove to fresh air and keep at rest in a position comfortable for breathing. Keep container tightly closed. Specific treatment: refer to Label or MSDS. **IF SWALLOWED:** Immediately call a POISON CENTER or doctor/physician. Get medical advice/attention if you feel unwell. **IF ON SKIN:** Gently wash with plenty of soap and water. Immediately call a POISON CENTER or doctor/physician. Call a POISON CENTER or doctor/physician if you feel unwell.

Disposal: Dispose of contents and container in accordance with relevant legislation.

IMDG Code :--

UN No. :--

IATA :--

Hazard Pictogram(s):



GHS06



GHS08



GHS09

Replace date 29-May-2023